

M

**MARZ
AUCTIONS**



FEBRUARY PREMIER AUCTION

FEB. 22ND, 2025 AT 10:00 AM EST



FEBRUARY PREMIER ANTIQUE & VINTAGE TOY AUCTION

Spanning the centuries, Marz Auctions is offering outstanding toys Feb. 22nd, 2025, 10:00 a.m. EST in partnership with Ed Sandford and Antiquetoys.com. Our Winter selection will include beautiful vintage and antique toys featured in this catalog as well as Liveauctioneers.com. Call, email, text, or stop by for future consignments. We specialize in helping estates with the utmost dignity. We can also help you downsize your toy collection. Email us at:

toys@antiquetoys.com or oldtoys1960@aol.com



Bruce 941-302-0572

Ed 727-631-4535



Lot #1 Large Dayton Toys Number 530 top-up touring car. Toy at 13.7 inches in length with a working friction drive at rear. The toy was made circa 1911. Good used original condition with darkening and added varnish. \$100 - \$300

Lot #2 Unusual steel tow truck with dual rear tires by Richmond Scale Model Toys. Nice company sticker on the hood. Toy close to 13 inches in length with boom. \$120 - \$280



Lot #3 Distler convertible windup BMW. Model D 3150 a.k.a. 'wanderer' with working windup and rubber tires. Desirable three-colored version with silver highlights. The toy winds up and works forward with gearing, reverse, neutral, and has a brake. Steering works. 9.5 inches long. \$150 - \$300

Lot #4 Early cab over design Police Patrol truck with driver and working flywheel drive. The toy is 10 inches long with a nice combination of iron, steel, and wood. Gold hand-painted pinstriping and 'Police Patrol' marked on the front. Cataloged circa 1903 in Butler Brothers wholesale catalog. \$160 - \$320



Lot #5 Wyandotte red and black tractor with green trailer. Toy over 11 inches long with original paint and yellow wood wheels. Design similar to patent model circa 1932. \$120 - \$200

Lot #6 Multi-colored 16-inch long street car by Republic Tool (and toy) Products Company. The friction drive works properly on disc wheels. Four steps are still present. Nice multi-colored toy circa 1926. \$180 - \$300



7



Lot #7 Buddy L Windup Car with prewar streamlined car look. Steel Toy at 10.3 inches long works. The toy properly winds up with alternating back the third wheel dropping down to turn the car. The original toy with stickers is still present. \$190 - \$340

Lot #8 Two-tone two-door coupe with grill and headlights present. Disc wheels but no friction drive present. The front bumper and rear rectangular bumper are present. The toy at 13.5 inches long. \$180 - \$350

8



9

Lot #9 Outstanding condition Girl and Goose friction steel toy. Dayton Toys friction whimsy circa 1915. The girl appears to be chasing a goose with an eccentric mechanism that makes her wave her stick. The friction drive properly turns. 10.5 inches long. \$200 - \$350

Lot #10 Republic Toys blue and gold limousine with six spoked wheels. The toy at 11 inches long with strong original condition. Some chipping to the hood area, otherwise bright gold highlights throughout, and a beautiful design. The friction drive does not work. \$220 - \$370

10



11

Lot #11 Highly unusual Auto Garage with hand-painted detailing. Painted early gas pumps on the side and wood door with barn-like latch. Scale is perfect for housing the Republic Auto above (sold separately). 12 X 9 X 7. \$200 - \$400

Lot #12 Scale Doepke circa 1956 MG TD red convertible. Outstanding toy with superior bumper and wheel detailing. Painted in red with working steering, instrument cluster sticker intact, headlights, and spare. 15 inches long. \$220 - \$500

12



13



Lot #13 Schieble Toys U.S. Mail truck, a tough-to-find panel van variation made in Dayton, Ohio. Variation documented in 1926 within a Carson Pirie Scott & Co catalog in 1926 as shown with no driver. The front grill was replaced. The toy at 12 inches long. \$200 - \$350

Lot #14 Set of two Buddy L Flivver or Model T trucks. Rare thin dump cart toy that works with a latch and working steering. Second Express Truck with tailgate and steering. Each toy was restored, with the express truck still retaining a partial Buddy L sticker. Largest at 12 inches in length. \$350 - \$600



14



15



Lot #15 Beautiful Kingsbury Desoto Airflow, modeled after the actual 1934 car. Steel windup that works with original tires and paint. The battery compartment has cardboard and proper metal contacts. Taillight and headlights are present. Some chipping to the hood and roof, otherwise a very clean original Kingsbury Toy. 14 inches long. \$200 - \$400

Lot #16 Lindstrom ca. 1930s pressed steel windup #934 "Skeeter Bug" bumper car, this is a red bumper car toy marked "8" on either side with a man and woman passenger. The toy has early variation side 'wing' bumper girds, 'headlights', and a grill with an emblem. Toy works. It's a good used toy. 9.25 inches long. \$150 - \$300



17



Lot #17 Early 1930s Fire Engine by Kingsbury Toys. Our Number 726 Engine is 9 inches long and cataloged in 1932 for \$1.00 including postage! Our example comes with the driver and two replaced rear tires. Windup works. \$170 - \$300

Lot # 18 Gas Engine powered (and dangerous) zip line race car. The toy has clean wheels and a body with a small, likely .09 displacement, engine. Spring and needle valves are still present. The car is in beautiful condition with a gauge cluster sticker. Toy over 11 inches long. \$120 - \$300

18





Lot #19 Early American Pressed Steel Number 52 Auto Truck. Toy circa 1916 with a very early open cab and cowl-based lights. The toy has a driver. 10.5 inches long. \$180 - \$320

Lot #20 Set of Gas Pump toys, one being a mid-century candy container marked 'candy pump'. The second one is in yellow and marked 'Gas' with gallon markings and an overhead glass container. Largest at 9 inches tall. \$80 - \$150



Lot #21 Wyandotte Easter truck in light green, light blue, and yellow. The toy comes with a bonus Easter Egg from Mattel #513. Toys are original. The egg not working and the truck has proper wooden wheels. The truck is 10 inches long. \$140 - \$280



Lot #22 Kingsbury Fire ladder truck circa 1930. The toy has a gong and working windup. The tires and wheels appear proper and original. Paint original. The toy is approximately 9.5 inches long. \$140 - \$280



Lot #23 Turn of the century American race car circa without fenders and with mechanics. Toy number 240 and made by D.P. Clark and Company. 11 inches long. Working. Riders are replacements. Paint original with wear and flaking. Toy circa 1907. \$200 - \$400

Lot #24 Beautiful top-up roadster version of the Buddy L Flivver. These toys replicated real-life Ford Model T cars. This example is original with working steering, full-length running boards, and top-up simulated convertible. Tougher to find models made from 1924-1926. \$375 - \$680



Lot #25 Early Top down touring car made by Dayton Friction Toy Works. The car comes with a stepped-up running board 'toolbox' and radiused fenders. Nice original toy with a driver circa 1911. The toy is 11 inches long. Stiff but working flywheel. Turning front wheels. Original 110-year-old toy with hand-painted detailing. \$220 - \$350

26



Lot #26 Tough to find Fire Department variation of the Wyandotte Cord Coupe in red. FD stamped on doors and hood has a bell. The rear wheels are loose on the shaft of friction drive. Original red-painted toy with beautiful styling. 13 inches long. \$250 - \$400

Lot #27 Desirable top up Express Truck in Ford style with top up. Flivver Number 210 with aluminum 'tires' and partial rectangular sticker below. Type II. Original toy with working steering and playwear. 12 inches long. \$300 - \$620



27

Lot #28 Kingsbury Pressed Steel Ford Coupe with boat trailer. This is a late 1930s toy with a working windup, original paint, and tires. The toy comes with a trailer and steel boat. Well-made headlights and detailed grill, adjustable steering; bumper original. Very nice original toy with a car at 12 inches in length. \$300 - \$650



28

Lot #29 Circa 1909 Dayton Toys Touring Car with red body and gold hand-painted accents. The toy comes with replacement riders and an unusual wood shift knob. Original paint with flaking and play wear. 11 inches long. \$180 - \$300



29

Lot #30 Early, circa 1910 fire engine with replaced driver. Toy made circa 1910 with a working friction drive for back wheels. Detailed green and red pinstriping with wooden and metal boiler in gold. Toy still has simulated cowl mounted headlights and detailed boiler parts. 14 inches long. \$220 - \$420

30



Lot #31 Blue streamlined Metalcraft Pure Oil Truck in clean original condition. A pinnacle of Metalcraft's toy design, with a scale model toy truck and details like nickel-plated highlighting, headlights, cast taillights, and rubber wheels. The battery clip and switch are still present. One headlight was replaced. Nice rear red bumper and original Oil, Yale tires, and Pure stickers and bumpers. A larger 14.5 inches long. \$400 - \$750



31

Lot #32 Steel green and red road roller marked 'Gt Britain'. The design reminds us of Mettoy-style designs. Windup works with adjustable steering. Toy drives and oscillates, similar to Marx Toy crazy car patents. Larger 12-inch long toy. \$175 - \$350



32

33



Lot #33 Clean Wyandotte steel coupe with headlights. The red and black toy appears original with wooden yellow wheels and light-up headlights. Wire and lever are still present with bulbs. 8 inches long. \$170 - \$240

Lot #34 1930s Hoge Mfg. Co. Fire Chief with working windup. The siren on the car works as the car moves forward. Adjustable steering and headlights. The brakes work and the door sticker is still present. 15 inches long. \$180 - \$320



34



35

Lot #35 Primitive and larger Steelcraft blimp aka zeppelin with gondola and fins. The toy has an industrial riveted design with rolling wheels. Circa 1930. Good original toy at 16 inches in length. \$190 - \$320

Lot #36 Dayton Friction Toy Works sledding toy with boy, Coaster number 660. Length is at 9 inches. Toy circa 1920 with play wear and original paint. \$180 - \$300



36

37



Lot #37 Early 1955 one-piece grill Tonka dump truck. The toy comes with all hubcaps and earlier 5-hole designs. Comes with original door stickers, a working dump lever, a tailgate, and a tailgate lock lever. 13 inches long. \$180 - 240

Lot #38 Tonka GMC Texaco fuel truck circa 1959. GMC 500 series tractor and trailer. Original bumper, with grill, has missing a tip, but otherwise a good used steel truck. Original wheels and stickers, including 'A Buddy L Quality Toy' label underneath. Paint original. The toy is 24 inches long. \$180 - \$300



38

39



Lot #39 Orange and white International grain stake truck. Toy by Tru-Scale at 1/16 scale and it appears to be a 1956 S-Series. Working and complex fold-out tailgate design that extends a lengthy 4 inches. Stickers on the cowl and door areas appear original. Proper bumper, headlights, and spring steering. Circa 1956. 14.5 inches long. \$240 - \$360



Lot #40 Two Wyandotte tanker trucks. The red toy has an original bumper and body with an opening door. Green has Sinclair Aircraft markings and proper hard rubber tires; the grill loose with one broken tab. Both toys measure 10.5 inches. \$180 - \$400

40



Lot #41 Very early D.P. Clark automobile Number 10 with child and driver. The toy has a desirable tin headlight variation circa 1907. Replaced child figure, otherwise in good original condition with working flywheel. 8 inches long. \$200 - \$400

41

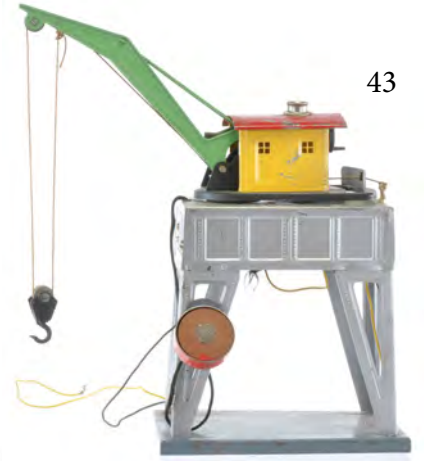


Lot #42 Well-made metalcraft 'Machinery Hauling' flatbed truck with ramp and Number 4 crane. Tough to find toy in original green and silver paint and headlight variation. Crane with original black and red paint. Shovel bottom present and proper wood wheels. 12-inch long toy with trailer retracted. \$300 - \$600

42



43



Lot #43 American Flyer green, red, and cream train crane with a magnet. Untested. A.C. Gilbert and American Flyer combination sticker present on the base, partially chipped. The toy is in good condition with some paint flakes but bright colors and strong original silver, grey, and green paints. 10 inches long and 10.5 inches tall approximately. \$150 - \$300

44



45



Lot #44 Marklin crane in green with brown brick base. Delicate tin toy with original door and hook. The toy spins on the base properly and the hook ratchets up and down. It is a very clean train toy with light wear to boom. 11 inches long by 9.5 inches high. \$200 - \$420

Lot #45 No. 701 City Hall Park/Union Depot trolley that was manufactured by Morton E. Converse and Sons of Winchendon, Massachusetts. Toy windup works with 'City Hall Park' and '175' painted on the front. Signs and seatbacks can reverse. Hang down bell with rope included below the roof. It is approximately 16" L. \$300 - \$600

46



Lot #46 Very early D.P. Clark floor toy in wood, circa 1902. The toy is 6 inches in length with a lady driver. This toy has steel wheels and drive gear; however, this model doesn't have a flywheel. Cast Iron top-down and lantern casting. Hand-painted pinstriping and detailing. \$220 - \$420

Lot #47 Set of two German Penny toys. Wagon and horse is similar to documented Meier toys. Farm cart of unknown penny toy maker. Largest at 5 inches long. \$100 - \$250



47

48



Lot #48 Ladder truck likely Fischer and fire pumper with arch by Distler. Second set back cab fire pumper likely Georg Fischer. Largest 3.7 inches long. \$100 - \$250

49



Lot #49 Early Meier train with flywheel and early textured stampings. Steam roller with flywheel. Train is 3.3 inches long. \$100 - \$250

50



Lot #50 Early clown penny style toy with juggling action. Pinch the handles and move the ball from hand to hand. Second mechanical spinner, Arnold 525K, hides then reveals a clown with outstretched arms; spring missing on this toy. Largest at 7 inches tall. \$100 - \$250

Lot #51 Two Kellerman toys, one blue limo and interesting # 130 limo with multi colors. Third Distler with bright gold hood, but missing tabs on body; loose on chassis. \$100 - \$250



51

52



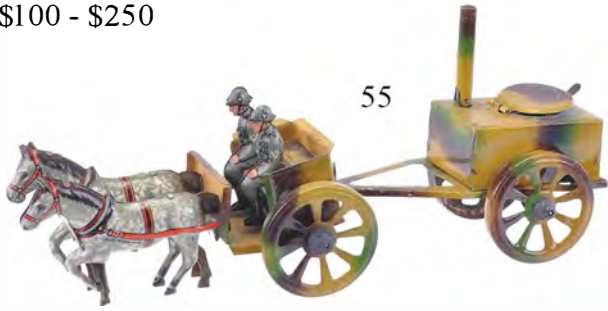
Lot #52 Popular Toonerville Trolley in a small penny toy size. Then second toy, an operating pool table with well dressed gent, likely Kellerman. Pool table at 4 inches long. \$100 - \$250

Lot #53 Unusual two horse penny toy with 'candy' container for cargo by Meier. Second hansom cab not yet attributed but documented by Pressland's "The Book of Penny Toys" for its style. Largest at 4.8 inches long. \$100 - \$250



53

Lot #54 Unusual transport bus with litho riders; German, but maker unknown. Second Georg Fischer truck works and can dump cargo. Good condition with a more matte colored litho on the bus. Dump truck with roof scratch, otherwise bright and lightly used. \$100 - \$250



Lot #55 Desirable Penny Toy horse drawn canteen with trailer. Toy comes with military figures and camo markings. Animal banding and soldiers similar to Fischer. Set close to 7 inches long. \$120 - \$250



Lot #56 Two penny toy lot with Auto and Gas and Oil service center. Limo has GF Fischer markings on door with second top down touring car; likely Fischer. Gas center has tear and brittle cardboard, 8 inches long. \$200 - \$400

Lot #57 Gely Lady with Rooster, with working pecking action. Second set of Roosters work also and comes with candy container/seed container in center. Both are charming animal penny toys; largest at 4 inches. \$100 - \$250



Lot #58 Outstanding boxed penny toy train finds from Japan. First is a K marked box with color prewar illustration. Colorful litho with Third Class, Post Car and cargo car. Second Set, likely K also, has First Class, Second, and Third Class cars behind train with tender. Largest box at 10 inches long. \$100 - \$250

Lot #59 Green horse and cab finely done and possibly a toy by H. Fischer. Second blue cab marked J Meier. Similar toys pictured in Pressland's Book of Penny Toys. Longest 4.7 inches long. \$100 - \$250



Lot #60 Two Kellerman fire ladder toys with variations. One has gold helmets and wheels with lugs. Second has red helmets and blackwall tires. 4.5 inches long. \$100 - \$250

Lot #61 Late 20th Century Penny toy with very early lithography. Attributed to Fallows of Philadelphia with gold pressing. Base resoldered and toy difficult to authenticate. 4 inches long by 3.5 inches tall. \$100 - \$250

61



62



Lot #62 Set of two German penny toy trucks by G Fischer. Yellow and dark green/grey color variations. Each at 3.8 inches long. \$100 - \$250

63



64

Lot #63 Striking penny toy style merry go round with twin engine bombers. Thicker steel construction with French blue, white, red wing emblems. Toy works well with spinning centrifugal action. Toy at 8 inch diameter to wing tips. \$200 - \$400

Lot #64 German Auto Garage with vines and two autos. Top down open touring is Distler with replaced front grill. Germany. \$150 - \$260

65



Lot #65 German Penny Toy Soldier with royal crowns marked on the blanket. Tin toy has very small F in blanket corner, likely for Fischer pre 1914 toys. Rare! \$100 - \$250

Lot #66 German tin windup birds in cages. Penny toys with bellows (not working) and one hoop stand. Colorful toys. Similar cages have been marked JAJ, Germany. Hoop over 7 inches tall. \$100 - \$250



66



67



Lot #67 Early Penny Toy with flywheel attributed to Fischer. Second GF marked coupe with landau top and glossy two-tone. Largest 4.3 inches long. \$100 - \$250

Lot #68 Early Meier Rocking horse with nice litho detailing on rocker. Toy circa 1900. The second tin penny toy is a hand painted series 1158 rocking style horse with rider by Jouet de Paris J.E.P. Hand painted horse toy at 4 x 3.5 inches. \$200 - \$400



Lot #69 Possible street sweep/water trailer horse in unusual style. Two additional penny toys with stake truck trailers. Longest at 5 inches. \$160 - \$260



Lot #70 Early Meier Gnome pair sawing on textured base. Early toy that works with a back and forth sawing action. Embossed on base with logo. 4 inches long. \$100 - \$250

Lot #71 Iconic Penny Toy made specifically for the British Market by Germany toymaker J Distler. This toy ship, made in Germany, represented Britain's navy power and later triumph over the German navy. Circa 1909. Toy just under 4 inches in length. \$160 - \$300



Lot #72 Distler limousines that had the added feature of an opening door and lithographed passengers. Toy 3 inches long. \$150 - \$240

Lot #73 Well executed Meier toy with company stamping on base. Boy in a multicolored outfit with textured/litho button up jacket and red piping. Dotted salmon colored socks well detailed. Delicately made toy in very good to excellent condition with bright gold underneath. \$150 - \$220



75

Lot #74 Early J. Distler penny toy with pre 1914 thistle and J.D. logo. Fixed bed dump truck even has a 'crank' nail in front. Toy at 5.7 inches. \$180 - \$260



74

Lot #75 Deluxe Windup horse and jockey toy at the upper range of penny toys. Seated jockey in full riding gear. Toy is 4 inches long and 5 inches tall. Made in Germany by J. Meier. \$180 - \$260



77

Lot #76 Sensational Penny toy by J Meier displaying articulation and a textured base. Wheels and axle system was primitive and added parts; it was quickly eliminated by Meier making this a rare treat. Base embossed with the Dog Cart J. Meier logo. 3.2 long by 3.2 inches tall. \$180 - 260



76

Lot #77 Near new J. Distler tractor in yellow, black, and grey with highly detailed driver. Toy works and has a great mid 1920 look. Made in Germany. 4.7 inches long. \$180 - \$260



79



78

Lot #78 J Meier child and toy in baby carriage in green variation. Outstanding and fun toy with child and a jumping jack toy. Green variation with the JM logo on the side. Room for a candy container below the cart. 3.5 inches long by 3 inches high. \$180 - \$300

Lot #79 Hand wind penny toy train with automobile center panel, Germany. Unusual train form with great hand cranking action and train track sound. Hillside with church on one tunnel. Lady running to car which appears to have the German Post symbol on the door. Train has lantern and tender, pulling a passenger car. Base 3 x 4 inches. Patented by Gely, Germany 1924. \$200 - \$320



Lot #80 This stickered Hubley Airflow with Century of Progress sticker is in good used condition with original tires. Arcade Model A coupe in red circa 1929 in original condition, 4 inches. Hubley Deluxe three color take apart coupe at 5 inches. This take-apart has great original tires. \$170 - \$300

80



Lot #81 Lot of 2. This is a sought-after water truck from the late 1920s. This original red-painted toy has yellow inset disc wheels. The toy is signed on the frame 'Kenton Toys Kenton Ohio.' No cracks or breaks were detected with original wheels. 5.8 inches. Hubley Mack dump truck in red and green. Popular C cab truck with original wheels. Working bed and cast-in driver; 5.2 inches. \$220 - \$420



81



Lot #82 Original Harley Davidson motorcycle with civilian rider, olive. Blue Champion motorcycle with cop. Each has proper and original wheels and paint. Both very good original toys. \$250 - \$450



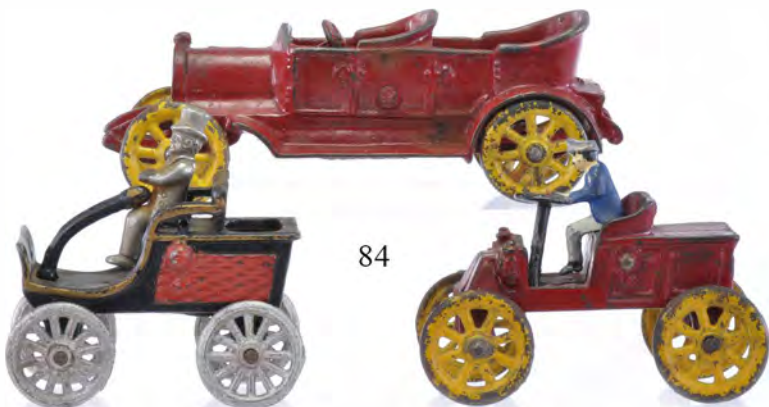
82



83

Lot #83 Blue Arcade ICE truck with rubber tires. Nice gold highlighting on the emblem and doors. Proper hard rubber tires with red insets. 6.6 inches. \$200 - \$400

Lot #84 Early Red Hubley open touring car in original condition and yellow wheels. Red Kenton Red Devil with replaced driver; 4.5 inches. Harris horseless carriage with tiller at 3.8 inches. \$200 - \$450



84



85

Lot #85 Kilgore tank with proper treads and original red paint. A.C. Williams tractor with cast-in driver; nickel rims at 5 inches long. Hubley cast iron motorcycle cop with broken headlight and rider; 4 inches long. \$160 - \$300



86



Lot #86 Arcade Avery tractor in grey and red. Closed cab; 4.5 inches long. Dent Roller and side dump cast iron cart. Set at 8.8 inches long. \$160 - \$340



Lot #87 Blue and Red Champion C-Cab Mack in bright condition. Blue-rimmed original tires. Arcade iron signs included. The truck is a larger variation at 8 inches. \$180 - \$340



87



Lot #88 Champion cast iron gas truck at 8 inches. Original paint red truck with 'Champion Gas & Motor Oil' in raised lettering. Replaced tires. Popular iron truck; no cracks or breaks detected. \$220 - \$400

88

Lot #89 Arcade Toys set of four 'Greyhound Trailer Bus', introduced in 1933. Colorful buses with hand-painted blue Greyhound logos on trailers. Smaller toy marked 'A Century of Progress Chicago-1934, Greyhound Lines.' This larger toy is a substantial 14 inches and more difficult to find; proper hard rubber tires. Smallest at 5.5 inches with proper hard rubber tires. \$320 - \$620



89



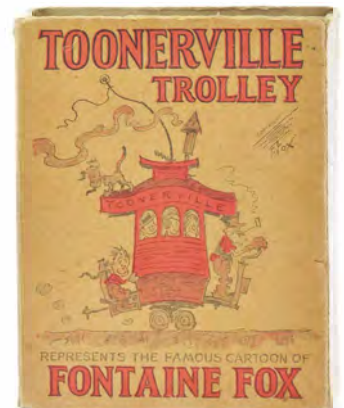
90

Lot #90 Lot of 2 Arcade Toys tractors from Freeport, IL. Avery has original red spoked wheels with gold highlights and an intricate casting. Arcade Fordson with the smooth wheel variation and replaced driver. Largest at 5.7 inches. \$220 - \$400

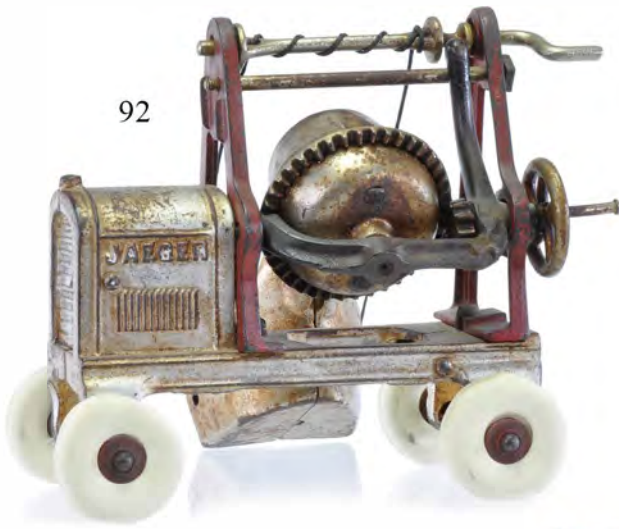
Lot #91 Sought after red and gold Toonerville Trolley by Dent Toys. The toy is circa 1930 with proper red and yellow paint with aging. The toy is still bright and comes with its original box marked 'Nifty' and advertising the comic by Fontaine Fox. The box missing one end and toy has roof and chassis crack. Toy 4 long by 5.5 inches tall. \$450 - \$800



91



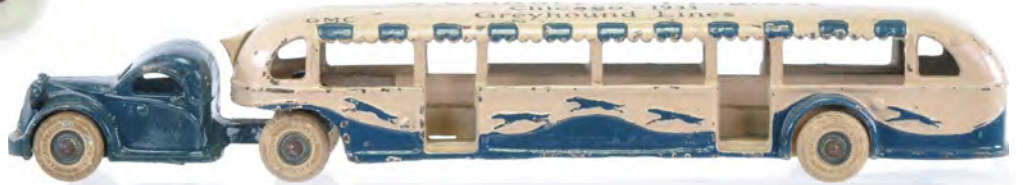
92



Lot #92 Kenton Toys circa 1930 cement mixer with working mixer and dump bucket. Tires are replaced. Toy is larger 6.2 inch long by 6.5 inch tall variation in red and silver. \$240 - 480

Lot #93 Largest 'A Century of Progress' Trailer Bus in Cast iron. Ten hand-painted blue Greyhound logos on the side of the bus. Proper hard rubber tires and gold headlight paint. 14 inches long. \$200 - \$420

93

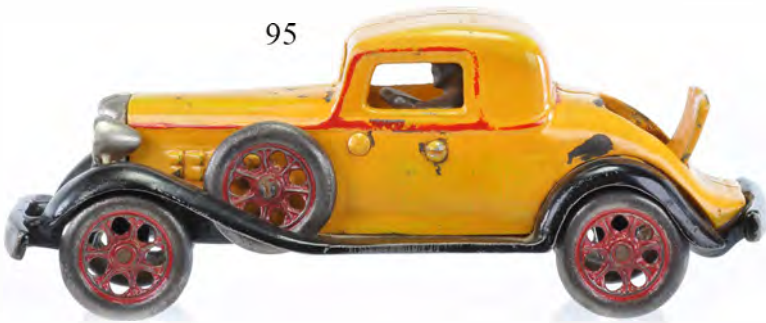


Lot #94 Excellent condition 1933 bus by Arcade Toys in iron. The toy comes with proper rubber tires and a trailer fin. 11.5 inches long. \$160 - \$240

94



95



Lot #95

Arcade RIO in yellow with steel wheels. Yellow has been repainted and blended in spots with original red highlights. The front bumper was restored with iron. The chassis and grill are iron. The jump seat folds down. The toy is an impressive 9 inches long with outstanding proportions and design. \$600 - \$1,100

Lot #96 Hubley streamline tractor trailer circa 1939. Transport has four iron vehicles from the 'Midget' lineup. Toy has proper and hard rubber tires with light play wear. A more deluxe toy in the late Hubley iron lineup. 10.5 inches long. \$200 - \$400

96



97



Lot #97 Chevy 'Bowtie' marked coupe circa 1924. The toy comes with white Chevy logs stamped still on the spare and radiator. Nickel-plated driver. Clean roof and toy with nice gold striping. The wheels still have white paint on the tires. A gem for Arcade Toy collectors. 6.7 inches long. \$400 - \$700

98



Lot #98 First variation of the Arcade Toys Mack truck. Spring loaded dump truck in desirable blue. Tires are hard rubber. Early door stickers intact with front 'M' Mack logo. Piston works, but rope must be resecured at frame. Great gold highlights on toy front end. Proper copper flashed driver. An outstanding example of Arcade's circa 1925 Mack Truck. 12 inches long. \$360 - \$700

Lot #99 Arcade service station with finials and immaculate sticker. The toy comes with a cast iron pump and filler 'hose' and original paint. 12 x 6 x 7 inches. \$300 - \$700

99



100



Lot #100 Arcade Toys cast iron International truck. Iron stake truck comes with hard rubber tires and a tailgate. Stickers are present on doors, proper driver is present. 11.8 inches long. \$450 - \$700

Lot #101 Difficult to find grey RIO by Arcade Toys. The toy comes with sticker on the inside of the rumble seat. Playwear and heavy cleaning to the roof. Tires replaced. 9 inches long. \$650 - 1,100



101

102



Lot #102 Hubley advertising van with Hubley in script. Green original paint with nice lights and bumpers. 4.5 inches long. A beautiful van with light edge wear; which is challenging to find in this condition. \$420 - \$650

103



Lot #103 Early Hubley fire patrol truck with two riders. Early Hubley toy circa 1920 with proper yellow wheels and axle peans. Vented front hood. A very nice original toy with delicate casting details. 4.7 inches long. \$180 - 250

104



Lot #104 Blue Arcade Toys 1934 Ford Sedan. Difficult to find Number 1620X released for just a year. Nice nickel grill and original rubber tires. Play wear and loose tires. Nice original paint and grill. 6.9 inches long. \$320 - \$520

Lot #105 Cast iron Kilgore large convertible. The toy has a folding rear seat and a separate driver. The paint, wheels, and driver appear original. A sought-after mid-1920s toy with Kilgore marked beneath. 8 inches long. \$250 - \$450



105

106



Lot #106 Glass and tin 'Don't Park Here' sign. Tin bottom threaded. Top glass with some red highlights. 2 inch diameter and 4.5 inches tall. \$160 - 300



Lot #107 Auburn rubber race car set of three. Outstanding condition Auburn toys with original paint and wheels. Drivers intact and toys have little wear. Top rubber toy designs. Largest at 6.5 inches long. \$180 - \$320

107



108



Lot #108 Cast Iron Chevrolet by Ironman Toys in 'Green Taxi' livery. The toy was hand-crafted by Ironman with a unique top-up open touring car design. Signed on bottom #12. Polished wheels. 8 inches long. \$380 - \$650

Lot #109 Medium-sized and tough-to-find early Patrol Wagon with three riders and cast-in driver. Beautiful red disc wheels and gold highlighting set off this early toy and its thin castings. Front fragile headlights and twin lanterns are still present. 7.8 inches long. \$380 - \$550



109

110



Lot #110 Large early Hubley Coupe with classic 'bug eye' headlights. Nice white on the wheels and highlighting. The rear spare is a likely replacement. Tough to find large-scale iron car. 9.2 inches long. \$400 - \$700

Lot #112 1939 Number 7270 World's Fair Tractor-Train by Arcade Toys. 3.3 inch tractor coupled to four cars with tin rooves; excellent 'New York World's Fair' stickers. Four trailers included with tin rooves; hooks and loops present on each. Each trailer at 4.2 inches long. Set in excellent condition with bonus extra car. \$220 - \$500

111



112



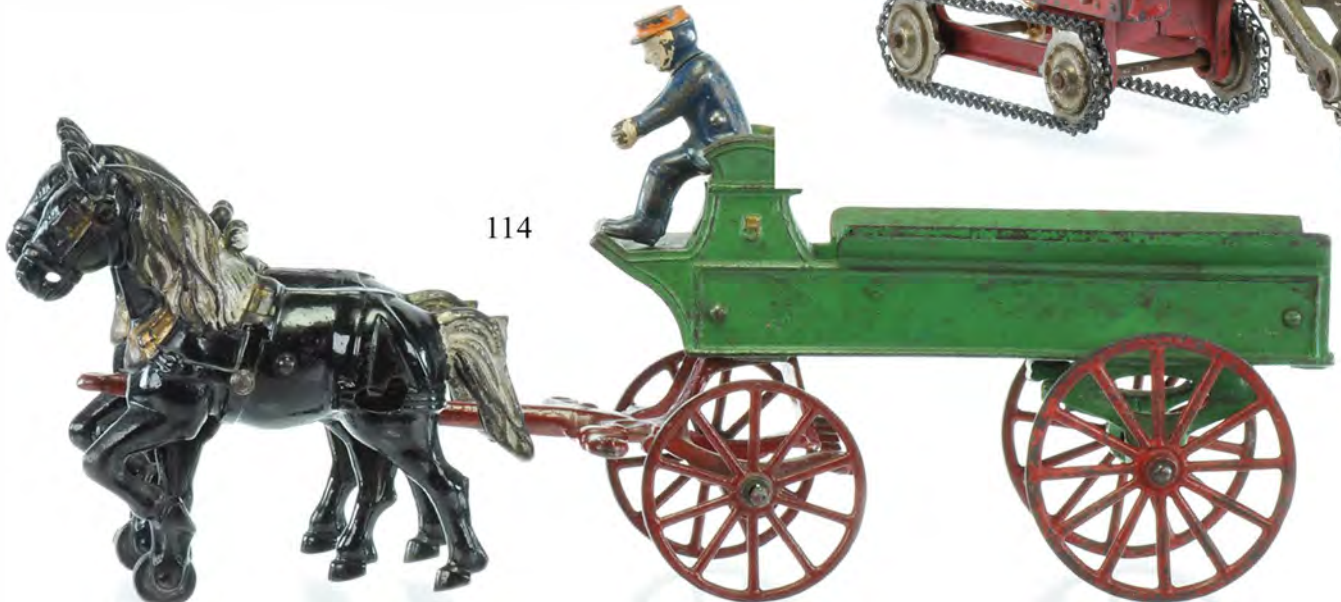
Lot #113 Kenton Buckeye Ditcher with beautiful original red, green, and gold paint. One missing chain. The toy is a feat of casting expertise. Thin struts and rivets are throughout the toy. 9.5 long inches by 5.5 inches tall. \$440 - \$750

Lot #114 Kenton Toys original green, red, and black cast iron wagon with gold highlights. Twin black horse variation with flowing manes. The toy appears free of breaks and cracks & comes with a proper driver. 14.5 inches long. \$180 - \$340

113



114



114B



Lot #114B Lug wheel variation of the Arcade Toys Mack dump truck in red. This medium sized toy does not have a spring but operates properly. Strong Arcade sticker present. Toy at 8 inches long with proper tailgate and latch. \$380 - \$700

114C



Lot #114C Cast iron stake Truck circa 1929 by Champion Hardware. Truck has original wheels and paint; truck has early and desirable disc wheels. A delicate casting that is free of cracks and breaks. Close to 8 inches long. \$180 - \$300



114E

114D



Lot #114D Well loved red Harley Davidson motorcycle circa 1929. Toy has the earlier variation with steel wheels. 'Harley Davidson' marked on tank. Motorcycle at 5.5 inches long. \$220 - \$500

114G



Lot #114F Harder to find Arcade panel van | 9.5" long Original driver. Some paint wear. Hubs on tires have been repainted. Arcade sticker on rear door. Rear door works opens/closes. Truck 9.5 inches long. \$200 - \$400

Lot #114E Large and early Arcade Toys 'Yellow Coach' double decker bus. Toy was made circa 1926 and a very large and heavy scale. Tires are aged and proper hard rubber. Paint is original and sheet metal seating is excellent. This is a tough toy to find in this condition with strong paint, accents, and rubber stamp markings. \$700 - \$1,200

114F



Lot #114G Just a fantastic cast iron toy by Larry Sieber of Motorcade toys. The open air 1925 Ford truck features a plethora of fruits and vegetables including a hanging produce scale hanging from the back of the roof. Has some very slight edge nicks otherwise is in great shape. Includes the original box. Romance of the Road Series. | 8.5" long. \$200 - \$400

115



Lot #115 G. Fischer open touring car penny toy. This is a more deluxe version of penny toys, which were entry-level tin toys for kids. This one has a working wind-up, driver, and multi-colored parts. This model was cataloged in the 1924 Universal German toy Catalog as part of Assortment 2061/5 with clockwork. It is larger, 5.7 inches long. \$200 - \$400

Lot #116 Hess made a friction motor and working hammer mill toy. The colors and lack of logos remind us of the Carette branding style. The hammer settings change with a lever from 100 to 300. The plinth is 13 x 3.5 inches. It works and has an activation lever for winding it up. \$180 - \$320



117

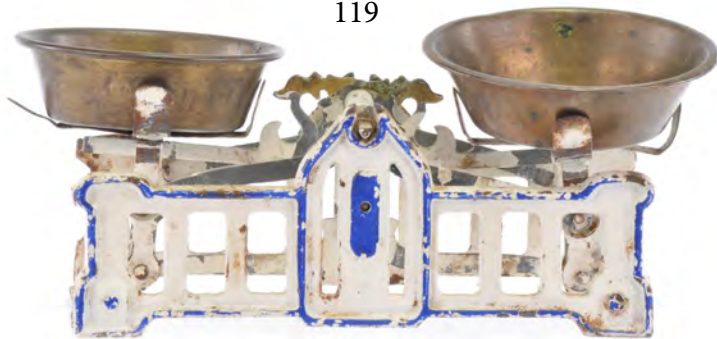


Lot #117 Blue and black tin limousine by Bing Toys of Germany. The windup works properly, and the condition is original. The toy has opening doors with a BW logo on the rear, circa 1927. It is 6 inches long. \$200 - \$400

Lot #118 Lehmann Wind Up 'Balky Mule' toy from Germany. Toy works and has great clown lithography on wheels with hand-painted face and arms. Mule missing one ear. 7.5 inches long. \$170 - \$250

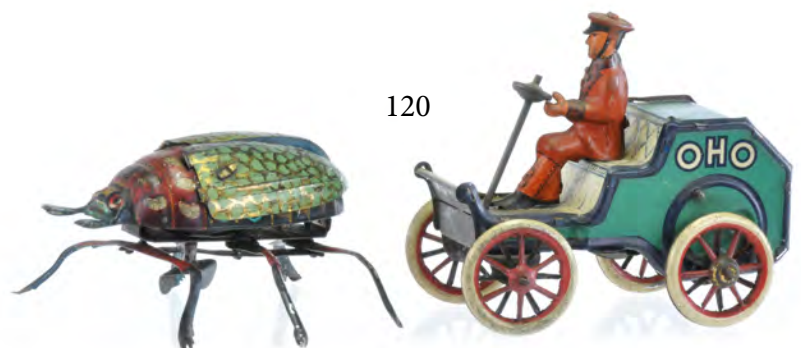


119



Lot #119 White-painted German toy scales in a similar style to Marklin scales. Comes with two brass balancing pans and gilded indicators. Original paint. The beam does not stay on the center shaft. 5.5 inches long. \$100 - \$200

Lot #120 German Tin toy lot of two circa 1920. Early Lehmann beetle works but with only one wing flapping. OHO open car winds up and works properly; nice driver and lithograph. Largest at 4 inches long. \$170 - 250



Lot #121 Early open cockpit limousine in blue and silver. Early and original toy circa 1920, unmarked, likely Heinrich Fischer but with similarities to Eberl. Broken spring. Very clean and original toy with driver, luggage rack, and adjustable steering. \$200 - \$400

121



122



Lot #122 German tin windup porter with luggage, marked EMG, Germany. The cart is at 6 inches in length. Similar to a Fuchs of Germany design, but documented as a Hammerer & Kuhlwein toy in 1938. \$150 - \$300



Lot #123 Unusual carded Majorette toys from Majorette, France. Additional Matchbox tractor trailer included and Mini Marx Crane with box. Largest at 7 inches long. All near new old stock with shelf wear. \$150 - \$280



123



124



Lot #124 Early German open touring car with driver. Toy windup works. Nice red litho with grey wheels and blue textured interior. Toy likely Eberl of Germany. 5.5 inches long. \$200 - \$400

Lot #125 Charming American boy in a pedal car by Lehmann. Toy numbered EPL 684. Working pedal car where the boy's legs 'pedal' as the toy rolls forward. Original used condition toy made circa 1915. 4 inches long (10cm). \$120 - \$220

125



126



Lot #126 Arnold Monkey with fez on cart is tin litho circa 1950. Schuco Drummer comes with tin body and felt accessories, marked Made in Germany. He vibrates and moves while drumming three long strokes then six fast strokes. Arnold tricycle skips gears and missing body tabs. Drummer 4.5 inches tall. \$150 - \$300

127



Lot #127 Stylized Phantom III Rolls Royce tin windup circa 1936. "Made in England" Wells-Brimtoy Ltd with striking blue and white coloration. Windup Sedan de Ville needs to be adjusted due to a loose spring. Clean toy with a very short pre-war run. 9.2 inches long. \$200 - 400

Lot #128 Blue Schuco Windup 3000 with box. Toy has proper steering and wooden pegs. Windup does not hold tension. Toy comes with proper cable and windup key. 4 inches long. \$80 - \$160



128



129



Lot #129 Patented D.R.P. German windup coupe with box. Spectacular and compact toy with a two-tone cast body and tin chassis with a combination of different cam arrangements. Gesha utilized a similar patent post-war, and we suspect this was a rarely seen export toy pre-war. License plate marked GS-0055. Cam works properly with an adjustable arm; windup works with a wheel brake. Condition is the finest we have seen, with windup, colorful box label, and instructions. \$150 - \$300



130

Lot #130 Three English Coronation coaches including a tin carriage with six horses. Second metal and plastic open coach. The third unusual tin 'crown' vehicle marked Philip M. Walmsley Japan. Crown loose on the vehicle. Longest toy at about 14 inches in length. \$120 - \$300



131

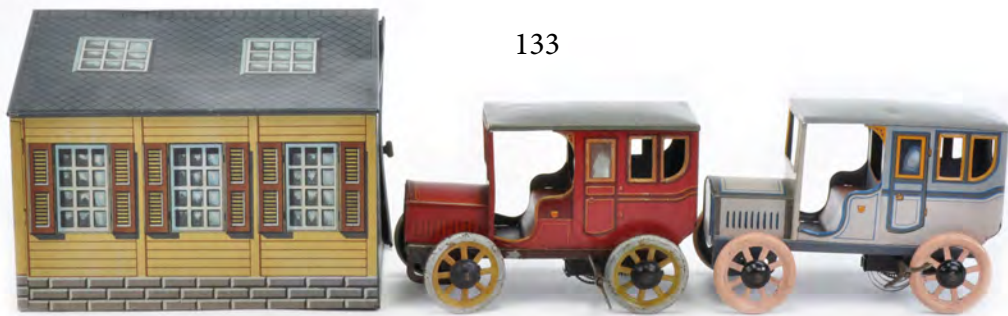


Lot #131 Well-executed Lehmann 771 garage with flowers, vines, and a textured roof. Doors open to park the 765 green sedan, patented in 1927. Sedan works but windup needs adjustment. The garage works and has opening doors. The garage and car are 6 inches long. \$180 - 360

Lot #132 Simple penny toy-style truck with replaced driver. One wheel is a solid disc but appears to be factory-made. Green, blue, black, and yellow lithography. Non Pareil made similar toys. 7 inches long. \$100 - \$200



132



133

Lot #133 Bing Garage circa 1912 with open cab limousines/sedans. The red variation has orange pinstripes and grey accents. The unusual pink/salmon variation comes with grey accents. Both windups work and garage doors properly locked in place. Shiny original toys by Bing of Germany. The garage is 8.2 x 6.2 x 4.7 inches. \$420 - \$800

Lot #134 Folk toy lot of two with a dancer lady and German Gnome ride. Folk dancer has a side bobbling head; working and with key. Second Gnome sky ride works well with a spring drive lever, spinning the riders. Dancer 6 inches tall and ride is a 5 inch diameter including seats. \$200 - \$400



134



135

Lot #135 Brown Bing taxi/limo with running boards and working windup. An earlier model with a diamond GBN logo circa 1912. 7 inches long but just under 4 inches tall. \$350 - \$620



137

Lot #136 Boxed kid snow sledding toy by Gescha, Germany. Nice colorful illustration with Gescha blue logo. Working windup with adjustable steering. \$120 - \$300



136



Lot #137 Early 1920s tin windup toy from the comic strip 'Toonerville Trolley'. Great German-made character toy that was imported into the U.S. under the Nifty branding & G. Bergdorf. Windup works but could use an adjustment. Roof overcleaned. Power antenna present. \$180 - \$320

Lot #138 Highly unusual 'Traveler' or Porter windup black man by Distler, Germany. The toy comes in variations, but this shows a dapper man with flowers on the lapel and exotic luggage stickers from Tokio/Tokyo to Roma, Calcutta to New York. 7.2 inches (19 cm) tall. Windup works. Good used condition with play wear and abrasions. Luggage wheels present. \$400 - \$700



138

139



Lot #139 Early prewar French Fire truck with riders and driver lithographed into the windows. Toy freewheels on Dunlop tires/wheels. The candy container/biscuit tin lid properly hinges from the front roof. 7 inches long. \$180 - 300

140



Lot #140 Mettoy open lorry/truck circa 1936. Wheels marked 'Dunlop 90'. Tipping bed with working windup. Marked 'Made in England'. 12.5 inches long. \$250 - \$450

141



Lot #141 Tin Ambulance van of Style number 13, cataloged 1931. White and black Ambulance made by A. Wells & Co of London. Detailed driver and steering wheel with lithographed silver grill and headlights. Working 5-inch long clockwork van. \$250 - 475



142



143



Lot #142 Distler reversing car circa 1936. The toy runs forward, then the bumper pushes a mechanism to turn the car around and back up. 4.50 - 18 marked tires. Windup and holding brake work properly. 7 inches long. \$180 - \$360



144

Lot #143 Glossy Model T windup toy by Bing of Germany. This is the top-up four-seat open touring with plate 19872 and BW logo from the mid-1920s. \$200 - \$400

Lot #144 Schuco windup man and child. Charming toy with celluloid little girl being lifted by dad in a traditional German outfit. The body is metal with felt coverings. The girl is celluloid. The toy works with lifting and moving/vibrating action. 7 inches tall. \$70 - \$150

145



Lot #145 Marked CKO or Kellerman flip car that converts from a Volkswagen convertible to a sedan. The toy flip mechanism works but the windup spring is broken. Missing part of the front right bumper. Bright original tin litho. Marked Coke and K-358. \$200 - \$400

Lot #146

Tin car driven by a horn blower with bellows- Tut-Tut. Toy windup works and steering oscillates. The E. P. Lehmann number is 490. Bellows operate but are old and not holding air. Both lanterns are present on a well used toy circa 1920. 6.8 inches tall by 6.8 inches long. \$220 - \$420

146



Lot #147 Seldom seen EBO Motor Automobile 113/26. Covered car with limousine/taxi arrangement for rear passengers. Kaufmann & Baer Co of Philadelphia (Kaufmann's!) price tag included! Text reads 6C1313 902 inventory number then below is marked 25 (cents). Windup catches at times but works. Red, black, brown, cream, grey colored car. 7.2 inches long. \$600 - 900

147



148



149



Lot #148 German G&K auto #511. The toy windup works and comes with a driver and steering wheel. Original tin with play wear and aging. 5.5 inches long. \$220 - \$380

Lot #149 Oro Werks of Brandenburg Tin Model T windup. Desirable two-tone red and black variation with box bottom. Twin-opening passenger doors, adjustable steering, and simulated engine crank. The toy's box is marked 2651/2562. Toy with light roof rubs, otherwise near new. 6.1 inches long. \$400 - \$650

150



Lot #150 Orange and black taxi by Oro Werks of Brandenburg. One headlight missing and the front wheels turn. Two cowl lights are present and two doors open. Windup works. 5.8 inches long. \$240 - \$420



151



Lot #151 Tin windup by Bing of Germany circa 1925. Tudor or Two-door Ford Model T has a license plate, moving steering, and driver. Windup works. 6.3 inches long. \$170 - 300

Lot #152 Lehmann tin windup EPL No. 345 New Century Cycle. Toy windup works and the toy rolls forward, the driver tips his hat, and the passenger spins an umbrella. Red roof strip variation with tiller. 5 inches tall by 5 inches long. Good original toy with playwear. \$220 - \$400



153

Lot #153 Rare TippCo fire engine and hose truck with garage. TCO on grills. The garage holds toys with a battery compartment and light; untested. Garage marked 'Made in Germany' and set likely for the American market. Both windups work and trucks have all three riders each. The garage has a nice gas pump illustration on the side. Trucks at 7.7 inches long. Garage 9.5 deep x 9.7 inches wide. \$400 - 800



152



154

Lot #154 Striking and near new yellow W.1931 Wells of London tin delivery truck. 'British Made' Express delivery tin works and is nearly new. Cataloged in 1931 as Wells Style No 31 Model "Express" Delivery Van. Shiny silver is used to highlight headlights and accents. The wheels are glossy black. 4.8 inches long. \$400 - \$700

Lot #155 Early wooden rocking horse with saddle and delicate detailing with platform horse. The horse on the platform has black hand-painted detailing and wooden wheels. Platform horse with cracked leg and missing its tail. Each is likely German from the Erzgebirge region. 5.7 and 6 inches in length. \$100 - \$220



155

Lot #156 German wooden sheep are documented in the 'Early Toys' book by Leipold and Bickert. Second hide-covered horse with detailed reins and belts, with glass eyes. The largest sheep is 3.2 inches, horse at 5.5 inches long. \$150 - \$300



156

157



Lot #157 British-made AWW 76 marked plate tin bus. Windup works. Regent Petrol ad on sides of bus along with lithographed passengers & driver. A. Wells Mechanical Toys. Bus at 6.5 inches in length. \$180 - \$250

Lot #158 Japanese-made 1907 Ford tin toy. Boxed toy with friction drive and working siren. Diamond TTK marked. Beautiful tin car with nice proportions. 4.5 inches long. \$100 - \$220



158

159



Lot #159 Yellow, red, and black tin open touring car by Fischer of Germany. Two-seat top-down car with glossy lithography and grey wheels. Windup works and the driver is present with a mustache. One rear wheel warped, otherwise very good original condition. \$350 - \$700

Lot #160 German tin limousine by J. Distler, circa 1929. The toy is very clean and has DUNLOP CORD marked tires and a working windup. 7.6 inches long. \$300 - \$600

160



161



Lot #161 Early Lehmann number 495 'Naughty Boy' with dad slapping action. Toy windup works and the front wheels turn from side to side. Father has a slapping motion as the tiller turns. Good used working condition at 4.9 inches long. \$240 - \$420

Lot #162 Tin windup truck by Wells-Brimtoy Number 61. Tipping truck cataloged circa 1932. 9.8 inches long. \$200 - 400

162





Lot #163 Boxed S.G. tin windup car with key. Outstanding example of a 1949 Ford with plated trim and maroon paint. The toy still has a key pressed into the end flap. The toy has a bright chrome trim and works. Levers reverse the toy or make it go forward. One stops the tires as you wind it up. Excellent condition. The car is 11 inches long. \$380 - 600



163



164

Lot #164 Large made in England Fire ladder truck by Mettoy. The company was founded in 1933 by Phillip Ulmann, a premier Nuremberg, Germany toy maker. Three passengers on the back with tipping, raising, and rotating ladder action. Windup works. 12-inch long toy. \$180 - \$320



165

Lot #165 Lehmann Number 590 tin bus from Germany. The toy features a staircase and four bench seats above. Nice lithographed driver and steering wheel. The toy has adjustable steering and a working windup for driving. Condition is good, used with abrasions to edges and aging. 8.2 inches long by 5 inches tall. \$300 - \$600



167



166

Lot #166 Mettoy coupe in bright red and cream. Well-sculpted bumper and radiator with glossy wheels. A saloon-style toy (rear storage) works well. Made in Gt. Britain, 9 inches long. \$200 - \$420

Lot #167 Racing-style windup motorcycle by Paya of Spain. It is highly unusual to find this original pressing from the 30s with more details and delicate kickstand wheels. Detailed spoked main wheels with whitewalls. Rider in brown 'leather' jacket. Tank embossed PH. Original toy circa 1932. Windup works. Some hazing to the left boot area and age spotting, otherwise a very nice find. 6.6 inches long. \$200 - \$400

Lot #168 Early tiled bathtub and overhead shower by GoSo, Germany. The detailed tub has fish and sailboat imagery, blue highlights, and ride and gold hand-painted detailing. Baby is quite a find, as it is a 'drinking' and 'potty' hollow toy in porcelain with a D.R.G.M patent. Sr. 1108 and 2664 are marked on the back. -Open mouth and blue eyes. Tub is 6 inches long by 7 inches high. Doll at 3 inches tall and sitting. \$200 - \$500



168

169



Lot #169 Mid-1920s Bing Toys of Germany tin Ford. BW marked plate with 19872. Windup works and male driver included. Nice silver-painted headlights. 6.4 inches long. \$200 - \$400

170



Lot #170 Issmayer mechanical version of this Carette tin car is documented in French 1905 catalog number 3358/3 with two passengers. This outstanding variation has a mechanical clockwork and a lady that hits the driver with a handkerchief. Driver's neck extends up half an inch in an amusing manner, similar to Lehmann toys. Riders are hand painted, with lithographed blue, red, light blue, black, and gold. Car approximately 15 cm or 6 inches long. \$700 - 1,100

171



Lot #171 Tin man with hat and suitcase cataloged as 'Traveler with Suitcase' by Voit of Zirndorf, Germany. Josef Kammer of Furth joins the patent. Toy featured in "Tocatta for Toy Trains" by Charles Eames. The toy has a fun action- the legs operate like a wheel, sometimes wandering, and the arm moves in transit. The toy at 4.5 inches high. \$180 - \$400

Lot #172 Large tin limousine marked 'NUF CED' with driver made by Bub. We have not seen another toy with this version, a 'cute name' toy imitating Lehmann's toy style. The toy has a maroon glossy lithograph with light orange pinstriping. Black running boards and roof. Both doors open and the windup works. Steering adjustable. An outstanding and rare toy at 10.2 inches long. \$700 - \$1,500

172



174



173



Lot #173 Moko green, yellow, and black limousine from Germany. The hood opens to reveal moving engine detail. Windup works forward and backward. The box is difficult to authenticate. Clean roof and only light play wear to brake lever. 9.7 inches long. \$600 - 1,000

Lot #174 Clean and glossy Chad Valley large biscuit van with game board litho. Toy made by Chad Valley Works, Harborne, England. The back door opens. The top has elaborate color game board boxes lithographed on the roof. Silver radiator litho marked Dennis for Dennis Eagle Ltd, an English lorry maker. Spring windup works. Larger 10-inch long by 5-inch tall toy. \$400 - \$900



175

Lot #175 Hand-painted Carette dark green and black limousine. The toy has rubber tires, three headlights, and rubber tires. Both doors open. Spring drive stiff and we chose to not wind up the toy. Driver replaced. \$1,000 - \$2,000

Lot #176 German horizontal bar gymnast toy by Hans Eberl. The tin toy uses its arms to wind up. Toy somersaults on the bars and then returns, using its inner spring mechanism. The base was replaced and the toy was restored. A very rare German toy documented in the 'Lexicon of German tin toy industry' page 118. The base is 5 x 5 inches and the bars are 9.5 inches tall. \$450 - \$800



176



177

Lot #177 'Skier with Stick for Locomotion' as documented by German Patent. Original tin toy made by Max Dannhorn, Nurnberg circa 1902. Original paint with chips; works with a pole. The toy moves properly with windup. \$400 - \$700

Lot #178 Early Gunthermann tin windup with violinist and banjo player minstrels. Seated figures work with strumming hand action and a plink-plink music box. Musicians strum their instruments and one player's mouth moves. 8.5 inches long by 8 inches tall. Condition is original with flaking paint; toy circa 1900. \$700 - \$1,300



178



179

Lot #179 Early thick tin streetcar toy, likely French. Red, green, and gold hand-painted body with white curtains and white rubber stamp designs. Windup is similar to French movements and wheels have a C.R. or Rossignol six-spoke style. The toy at 14 inches long and 6.5 inches tall. \$500 - \$900



180



Lot #180 Tin windup Main Street Trolley by Fischer Toys of Germany, distributed by Nifty. Near new toy inside a clean box with simulated alligator skin texture. The label has a small Made in Germany mark as well as Patent details. The toy works via windup and moves, then pauses for doors to open. Box at 9 x 3.5 inches. \$300 - \$600

Lot #181 Tin bus marked Bico Bus to Joyville by Distler, Germany circa 1928. A clean tin bus that drives in circles and has riders with a moving ticket puncher. Separate driver in the cab. Toy 8.5 inches long. \$500 - 900

181



182

Lot #182 Elaborate and colorful red, blue, white, and yellow tin carousel by S. Gunthermann. Carnie cranks the ride as the hanging riders spin about. Mountain imagery on the column and toy is set off by a red and white flag. The toy has a 5.4-inch diameter and is 7.5 inches tall. Windup works with a plink-plink music box playing properly. \$600 - \$900

Lot #183 Glossy German tin train station with overpass and accessories. The toy comes with a covered area and is in original very good condition. Toys marked with the B train logo of Ottmar Beckh of Nurnberg, Germany. The covered area and station are over 17 inches long and likely for O gauge. \$180 - 300

183



Lot #184 Large 15-inch tall Rolly Polly aka Rolly Dolly paper mache toy with moving eyes. Eyes tilt with body movement but stick at times. Highly unusual form with a finely painted face and body. Slight separation at the belt line, otherwise very good used condition. \$100 - \$300

Lot #185 German Paper Mache Rolly Dolly with fine face painting. Outstanding face and expression. Toy hand painted with green, red, cream, black, and nice detailing. 6 inches tall. \$100 - \$250

Lot #186 Nice Paper Mache Rolly Dolly Santa in red and cream. Rolls properly on a blue base. 7.5 inches tall. \$100 - 250

Lot #187 Striking Schoenhut style boy in blue. Rolly Polly/ Dolly at 6.5 inches tall. Schoenhut Toys sticker on base with wear. This is an earlier design, likely circa 1902, one of the oldest ideas in toymaking- for the baby. \$100 - \$250



184



185



186

Lot #188 Blue cap and suspender boy character by Schoenhut Toys. Partial sticker on the bottom. An unusual stout child with a dapper suspender, tie, and cap appearance at 6.5 inches tall. \$100 - \$250

Lot #189 Character pair of Schoenhut figures- Max and Moritz. Set of well-detailed toys at 4 inches tall each. These characters would execute childhood pranks and trace to a German 1865 book by Wilhelm Busch. \$100 - \$250



187



188



189



190



191



Lot #190 9.5 inch Rolly Dolly with the club by Schoenhut. Part of the Humpty Dumpty Troupe. Chip at club top, otherwise very good to excellent condition toy circa 1905. \$100 - \$250

Lot #191 Clown from the Humpty Dumpty Circus and Schoenhut. The green shirt and red hat version hold club, similar to Punch of Punch and Judy or an officer. 6 inches tall. \$100 - \$250

Lot #192 Caricature of a Chinaman in the typical red long-sleeve shirt and tassel cap. Hand-painted face. Ears, base, and some spots restored. \$100 - \$250

192



193



194



Lot #193 French doll head rolling Rolly Dolly style toy. Toy circa 1900 with great face detailing and steel wheels. \$150 - \$350

Lot #194 Orange Variation of the Rolly Dolly toy line and attributed to Schoenhut. Fringed collar and club sculpted out of Paper Mache. 9.5 inches high. \$120 - \$220

195



196



Lot #195 Early and finely made Rolly Dolly child clown with red velvet hat and accents. The toy has eight bells on the outside. Paper Mache. Larger 13 inches tall. \$200 - \$350

Lot #196 Yellow and red-jacketed clown with blue hat. This Paper Mache Rolly Dolly attributed to Schoenhut is 6 inches tall. \$120 - \$220

197



198



Lot #197 Juggler clown Rolly Dolly with a yellow body and white neck fringes. Cataloged 510/30 circa 1908, Juggler clown is holding balls and has a tilted black hat. Advertising states "...no doubt one of the oldest ideas in History of Toy-making, and we believe it was already found in Noah's Ark..." 7 inches tall. \$120 - \$220

Lot #198 Distinguished top hat clown with a blue jacket. Rolly Dolly/Polly has chipping to the waist. Tie and cane holding variation. 6 inches tall. \$100 - \$200

Lot #199 Lady Jester with miniature Punch (no Judy) doll in hand. Orange and yellow outfit with green and blue accents. Good used with some chipping and a partial sticker at the base. \$120 - \$220

199



200



Lot #200 Large yellow coat clown with brown hat roly dolly. The toy at over 12 inches tall with an unusual face and brown hat variation. Good used condition with a crack at the top right of the temple. \$140 - \$250

Lot #201 Charming white and blue Rolly Dolly/Polly with a basket design and red and blue eggs. Strong paint condition with crisp ear sculpting. Unmarked. 7.5 inches tall. \$140 - \$250

Lot #202 Beautiful Schoenhut-style Rolly Dolly with a 'serious rabbit' mug. The toy is a real eye-catcher with the 'attitude' and a tilted top hat. It reminds us of a dapper and important real-life character in life. Fine shading to brown face and ears with red, blue, cream, and black accents. The left ear has a hairline crack. 10.5 inches tall. \$200 - \$400

Lot #203 Rolly Dolly with a blue hat, sitting at 15 inches tall. The toy has red, blue, green, white, brown, and flesh and painted detailing. A similar toy was featured by The Strong Museum of Play in their online Schoenhut of Philadelphia, PA presentation. Some separation to the waist, otherwise in very good used condition. \$150 - \$240

201

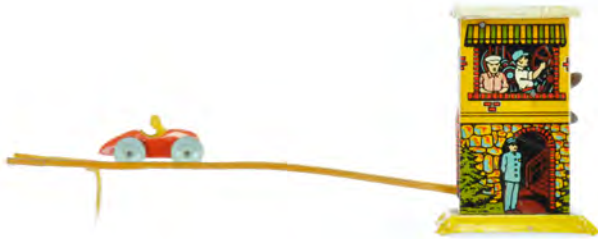


202



203





204

Lot #204 Lot of three vintage toys, including a Capitol Hill Racer by Unique Art with car, a #4 racer, and a red streamline car. The Capitol Hill Racer includes one section of track and is functional. The #4 racer's spring mechanism does not work. The red streamliner car, marked Marx, measures approximately 6" L. Condition as shown. \$100 - \$200



Lot #205 Lot includes an Army Sergeant windup toy, approximately 5 1/4" H, and a Jumpin' Jeep toy with four riders, approximately 5 3/4" L. Both windups are functional. \$180 - \$220



205

Lot #206 G.I. Joe tin toy with K-9 pups, featuring a glossy lithograph design and crated dogs in his hands. The windup mechanism works well. The toy measures approximately 9" H by 3 1/2" W. \$140 - \$220



206

207



Lot #207 Lot includes three tin windup toys: a J. Chein Duck, a J. Chein Bear (approximately 4 1/2" H), and a Jumping Rabbit No. 79 (approximately 5 1/4" L) with its original box. The Duck and Bear windups work well. The Rabbit box is missing one set of end flaps. \$120 - \$200



209

Lot #208 Set of four vintage Walt Disney Productions films, including Snow White, Bambi, Pinocchio, and Dumbo, marked Craftsmen's Guild and Hollywood. Includes a viewer featuring Mickey Mouse with a plastic swirl design. The films are fragile and some show some frames have broken off the ends of the film, but appear to be a complete set of four. Boxes measure approximately 2 3/4" L. \$100 - \$200



208

Lot #209 Lot includes three vintage tin windup toys: a Strauss Jenny Cart (functional but dusty), a Strauss Hee-Haw Cart with a dog and milk jugs, and a Marx Pony Cart with a driver and reins. All windups work. The largest toy measures approximately 10" L. \$200 - \$340

210



Lot #210 Vintage Wyandotte Mystery Car in red with silver wheels, featuring an original red lithograph design with black pinstriping. The tin push-down mechanism is functional. This impressive toy measures approximately 14" L. \$220 - \$400

211



Lot #211 Large penny toy-style American truck featuring dual rear tires, a clean tin driver, and intact headlights. The toy measures approximately 9 1/2" L. Likely Mohawk and in original condition as shown. \$120 - \$200

Lot #213 Wolverine No. 22 Coal Loader toy with marbles, featuring near-new condition and vibrant lithography depicting a train and tracks. Includes the original box, marked "Number 22 Coal Loader." Box measures approximately 11" x 8 1/4". \$140 - \$240

Lot #212 Lot includes two vintage toys: an unusual sports toy by Lorraine featuring an early basketball game, appearing unused with tissue paper and a partial box (box measures approximately 11" x 7"), and a Woodette Big Top Circus set with figures, inner backing carton, and unassembled components (box measures approximately 12" x 12"). Condition as shown. \$100 - \$220



212



213



214

Lot #214 Charlie McCarthy character toy by Marx, featuring a moving head and wheels. The windup mechanism works, producing a fun, erratic car action. The steering wheel is missing. The toy measures approximately 7" L and is in good used condition. \$170 - \$240



Lot #215 Outstanding Black Diamond Coal Truck in near-new old stock condition, featuring a working lift bed and ramp. The glossy steel/tin toy is made from a thick gauge, and the original box is included, though it has a missing flap on one end. The toy measures approximately 10 1/2" L. \$120 - \$240

215





216

Lot #216 Green variation of the Strauss No. 98 city bus, featuring a windup mechanism that works. The driver, appearing to be a woman, is present. This clean, original toy measures approximately 10 1/4" L by 5 1/2" H. Condition as shown. \$300 - \$450



217

Lot #217 These pieces are tin lithographed "Merry Builders Automatic Sand Toy" that were manufactured by Cowan de Groot/Codeg Productions of London, England. This company was most famous for being one of the first companies to procure licenses for the Doctor Who series in 1965 and for producing a line of Dalek Robot toys that became fan favorites. This scarce British piece is comprised of a tall brick building and 3 builders on different levels with plastic hoods on their backs. When sand is poured into a hopper at the top sand filters down pouring from one builder to the next until it empties into the trough below. Only one comes with a trough and a box. The other is loose. These are approximately 16" L x 6 1/4" W. \$120 - \$200



218



219



Lot #218 Marx Snappy the Dog with Doghouse, featuring great lithography with dog and cat detailing. The spring steel mechanism is present, but the plunger is missing. The rooster crows well, and the toy is made by Linemar Toys, Japan. The doghouse measures approximately 4 1/2" L by 4" H. \$80 - \$140



220

Lot #219 Colorful tin Zippo Monkey by Marx, operating well despite a fragile string. The chest has minor abrasions, but the toy is otherwise in original very good condition. \$80 - \$160

Lot #220 Rare Schoenhut Auto-Builder Five-in-One car build set, allowing construction of various vehicles like a limousine, truck, or others. One headlight and one cowl light are missing. The original box shows signs of wear, including chipping, rough edges, and tape, but is present. The box measures approximately 12" L by 4" H. A tough-to-find automotive toy treat! \$120 - \$300



221



Lot #221 Beautiful windup street sweeper toy by Nylint Toys of New York. The toy includes a driver and operates by brushing the floor as it moves. The brush and belt are present, along with a working on/off switch. The box is included and is in good condition. The toy measures approximately 8" L by 5 1/4" H. \$200 - \$400



222

Lot #222 Popeye plane features a great crazy car rocking action with random forward/reverse movement. Popeye is present with his pipe, and the rear landing gear is intact. The propeller has been replaced. The condition is good used, and this is a tough variation to find. The toy measures approximately 8 1/3" L by 8" L. \$320 - \$640

Lot #223 Popular Amos and Andy tin car by Marx, featuring a dog and headlights. The windup mechanism works properly, and the figures bounce as the toy moves. The front hood ornament is missing, and the rear wheel is loose. The toy measures approximately 8" L. \$250 - \$400

224



225



Lot #224 Fun Daisy BB gun and target set. The toy gun has a Colts .22 style feel to it. BB cases are included, featuring red, white, and blue cases. The target is red and white with shoot-'em figures. The toy gun measures approximately 10" L. \$120 - \$250

Lot #225 Fun and fanciful fish toy by Marx, featuring a hinged design that allows it to wobble with eccentric wheels. The windup is not working. The lithography is vibrant, with accurate red eyes and mouth. This is a difficult toy to find! The toy measures approximately 8 1/2" L. \$180 - \$360

Lot #226 Early American tin horse and jockey with an embossed base and well-formed horse mane. The wheels, tail, and overall style suggest this toy is attributed to Fallows Toys of Philadelphia, PA. The condition is original, with heavy chipping and lifted paint on the base. Platform measures approximately 9" L by 8 1/4" H attributed to George Brown. \$200 - \$500

Lot #227 American tin lady herder with goat, featuring deep lithography and a textured body on the goat, showcasing a great sculpt. The herder has gold highlights and may have been reattached. This pull toy is likely attributed to Fallows. The toy measures approximately 8 3/4" L by 6 1/2" H. \$200 - \$360

223



226



227



228



Lot #228 Lot of four toys, including the popular Schoenhut Barney and Spark Plug Horse. The horse has proper ears and original outfit, with joints that work. The candy container is a rare glass toy with paint craquelure. The wooden Spark Plug pull toy is an unusual find. The largest toy measures approximately 9 1/2" L. \$400 - \$700

229



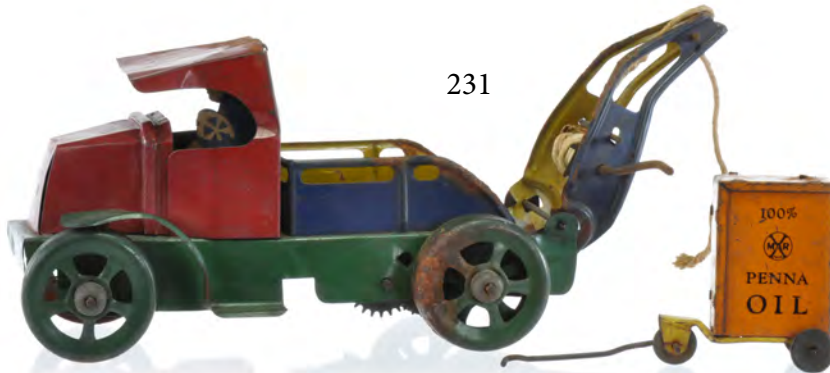
Lot #229 Set of Mickey and Minnie toys by Halsam and Jaymar. Unusual Pluto included too marked Walt Disney Enterprises. \$350 - \$600

Lot #230 Jigger Minstrel by Buffalo Toys. The dancer works and is likely a tribute to Al Jolson. This toy is cataloged as Coon-Jigger Number 106 by Buffalo Toys. The toy stands approximately 6 1/2" tall. \$150 - \$320

230



231



Lot #231 Tin tow truck by Marx Toys. The toy features unusual dual rear tin tires and working cranks. There is corrosion to the back roof. Penna[sylvania] oil cart included for service. The truck measures approximately 10" L. \$200 - \$400

232



Lot #232 Tin windup Inter-State bus in green and yellow. The toy works, featuring moving steering and a functioning windup mechanism. Driver and stairs are present. A good, lightly used toy measuring approximately 10 1/2" L. \$300 - \$480

233



Lot #233 Extremely rare tin windup panel truck by Wyandotte for Hollywood-style films and slides. The toy's windup mechanism works well. Tailgate and headlights are present. It is in very good original condition with lettering rubs on each side. The toy measures approximately 5.3" L. \$250 - \$600

234



Lot #234 Strauss red and yellow Trikauto car with driver. The toy works well, featuring a bucking random drive action. Marked "Ferdinand Strauss, New York, U.S.A." Measures approximately 8" L. \$140 - \$280

Lot #235 Strauss toy that wobbles and hinges like a jalopy. The car works well and features "Dizzie Lizzie" and "Lena" graphics. A great Model T-style toy measuring approximately 8" L. \$170 - \$340

Lot #236 Red and yellow A.C. Gilbert pickup truck with driver. Features a strong plated chassis with a working windup mechanism. The steering can be adjusted for turns. Circa 1925. Measures approximately 10 1/2" L with crank. \$140 - 220



235

Lot #237 Gibbs hand-painted girl in a dress on a swing with a wooden plinth. The toy works well and dates to circa 1920. Measures approximately 8.2" H. \$100 - \$200

236



Lot #238 This is a tin, hand-painted flip-over boy and girl on a teeter-totter toy manufactured by Gibbs Mfg. Co. of Canton, Ohio. This teeter-totter toy works by moving one of the children down and letting go. As you watch the teetering action come to its end you simply flip the toy over and they start their fun all over again. The boy is missing an arm. This toy is approximately 14 1/4" H with the boy and girl being 4 1/2" H each. \$120 - \$220

237



238



239



Lot #239 Gibbs boy on rocking horse toy featuring vibrant lithography and a hand-painted figure. The second toy is a U.S. Mail cart with a lithographed horse, iron wheels, and articulated design. The cart measures approximately 12" L. \$150 - 300

240



Lot #240 Tin windup toy by Lindstrom featuring an advertising trailer. The 6.3" toy works and includes opening back doors. Displays vibrant lithography with advertising details. \$140 - \$300

241



Lot #241 Near-new Marx Reversing Car made of steel and tin. Features a bright grille, trim, and intact rubber bumper. The underside is clean, and the toy operates smoothly. \$300 - \$500

242



Lot #242 Glossy Marx Racetrack with a 13" diameter, designed to guide four included cars around the track. Also includes an early version of the #61 one-man flywheel race car. Both toys are in original condition and function, though the Whee-Whiz spring shows some age-related weakness. The race car measures approximately 5" long. \$250 - \$500

Lot #244 Glossy and near-new Strauss Red Star Van Line panel truck. The toy features proper headlights, a lithographed lantern behind the cab, and a driver. The van is adorned with an ocean liner brand ad for "Red Star," an iconic early American brand seen in movies like "The Godfather" and "Titanic." The toy works and measures approximately 7.8" long. \$200 - \$400

244



243



Lot #245 Boxed Farmer Boy tin toy by Girard Model Works. The toy works well and features the less common grey cart variation with yellow wheels. It is in clean, glossy condition. The box is in good condition, showing some age and chipping, with a wrap. Box measures approximately 6" x 6". \$180 - \$360

245



246



Lot #246 Tidy Tim, the "City Spick & Span" cleanup man, toy by Marx. This toy reuses a Popeye tin stamping and features a man in a white coat, with some corrosion on his right shoulder. The toy comes with tools in his bin for cleaning up. His head moves, and the windup works. The toy measures approximately 8" long by 7.5" tall. \$300 - \$500

248



Lot #248 Character toys Maggie and Jiggs from Schoenhut. Both outfits are proper and original. Jiggs holds a cigar in his mouth and a corned beef and cabbage crock, while Maggie is holding the proper rolling pin for battle. Jiggs' head stringing has loosened but retains a partial 1924 copyright sticker on his foot. Maggie stands approximately 9" tall. \$450 - \$750

Lot #249 Tough to find Daisy Buck Rogers Water Pistol lot. Water pistol lever and trigger work properly. Set of four items comes with a Buck Rogers All Pictures Mini-Book and Lead Toy mold. Kids would pour in lead and make the included Buck Rogers 20th Century figure and villains. Blued Buck gun is not working. Largest pistol at 9.5 inches. \$300 - 600

Lot #250 Ingenious Marx Fireman toy works well, with the firefighter climbing up the ladder using a strong motor. The toy comes boxed, though the box is missing an end and has tape repairs. The toy stands approximately 12" tall to the ladder top. \$120 - \$300

Lot #251 Mother Goose tin litho toy by Marx with cat. The toy works well, featuring a hopping action. There are abrasions on the right side, and the string appears original. The toy measures approximately 9" long. \$210 - \$420

Lot #247 Strauss Bus 109 in strong, near-new condition. The driver and proper seating are present, with bonus riders included. The windup works. The toy measures approximately 10.5" long by 6" tall. \$380 - \$550



250



247



249



251



Lot #252 Giant Reversing Tractor Truck with a beautiful box. The toy is near new old stock, featuring a reversing lever, drive, and farmer. The treads are original. The box is missing one end flap. An outstanding condition Marx toy. Measures approximately 14" long by 6.8" tall. \$220 - \$500



Lot #253 Ferdinand Strauss Ham and Sam with banjo and piano action. The toy works with moving band players and features Black Americana lithography throughout. Measures approximately 7" long by 5.5" tall. \$240 - \$540

253



Lot #254 Boxed litho of the country Abner family around a piano. Abner has a clean face, as does Grandma and the rest of the family. Known for one of the nicest tin windup actions, this toy is a standout. Box measures approximately 7.5" L x 6.5" W x 5.5" H. \$340 - \$600



254



255



Lot #255 Prewar Wyandotte convertible with two riders. This green streamlined race car is in original, very good condition. It measures approximately 7" long. \$140 - \$250

Lot #256 Fun Joyrider Crazy Car by Marx Toys. This New York-made toy features luggage and a clean rider face. It works well, with very clean tires. The box is missing flaps and shows tape pull marks. One of the most iconic toys of the mid-1920s. Toy measures approximately 8" long. \$200 - \$400



256



257



Lot #257 Immaculate deluxe Marx Royal Coupe with rare rumble seat variation. This toy features bright headlights, grill, and emblem, with wheels showing almost no wear. A pristine example in excellent condition. Toy measures approximately 9" long. \$240 - \$550



Lot #258 Mickey Mouse still retains the Mickey Corp sticker along with a Japanese export sticker on his feet. He has clean four-finger hands, a proper tail, and a near-new body. Minnie is an even tougher-to-find toy, with proper shoes, dress, and hat, along with 'pie eyes.' She has a small dent on the back of her head, but otherwise, both toys are bright and near-new. They stand approximately 4.8" tall. \$260 - \$600

Lot #259 Popular Chicken Snatcher black man with dog attached to his rear. Toy works well and is marked with "Hey-Hey The Chicken Snatcher" on the bottoms of the feet. It stands approximately 8.3" tall. \$450 - \$800

Lot #260 Marx cop motorcycle with working start and stop switch. The toy features an Indian-style two-cylinder motorcycle design with Marx-Balloon 34 x 5 marked tires. The headlight and proper windup levers are still present. The toy is approximately 8.5" long. \$200 - \$400



Lot #261 Lionel windup Easter rabbit locomotive with Easter basket cars. A very challenging-to-find toy by Lionel, made for a limited Easter run. The toy features a working windup and includes three Bunny Express Easter cars, each adorned with vibrant chick lithography. The rabbit engine measures approximately 9" long with a coupler. \$650 - \$1,100



Lot #262 Immaculate private label L. Bamberger & Co. store advertising van by Marx. The toy features proper doors and near-new lithography. The windup catch was installed backwards. Toy measures approximately 5.3" long. \$200 - \$600

Lot #263 Early and original Stevens & Brown three-wheeled velocipede, circa 1880. The toy features a boy driver in original fabric clothing with striped pants. The spring is broken. Toy measures over 11" long. \$400 - \$800





264

Lot #264 Early American tin horse-drawn cart with a covered bed featuring Star Lithography on the bed. Cart by James Fallows of Philadelphia, PA circa 1890. Toy measures 8" long. \$150 - \$240



265

Lot #265 Early American horse-drawn trolley circa 1880, featuring iridescent gold parts and an open vestibule. Attributed to Fallows. \$200 - \$400



266

Lot #266 Marx Big Parade illustrating troops returning from World War I in a toy. Windup works well with a spinning airplane. Ambulance, troops, and cannon rotate around the bridge, decorated with red, white, and blue flags and bunting. Toy is very large at 24 inches long. Box is fragile, with chipping and tears. \$400 - \$800

Lot #268 Working boxed J. Chein Roller Coaster 275. This is the first time we have seen this colorful box with 1950s illustrations. \$220 - \$500

Lot #269 Fun and patriotic Coastal Gun from Pittsburgh, PA. Number 55 features a patriotic theme with balls, a spinner, machine gun, and ships protecting the beach. Place the planes in positions 5, 10, 15, and 25 to protect the score. Feed steel balls into the spinner raceway to score and knock out planes. Game is near new, with a dusty box showing edge splits and wear. McDowell Mfg. Co. Box approximately 14 x 14 inches. \$140 - 250



267

268



269



270



271



Lot #270 Patriotic World War II puzzle set with anti-Nazi and anti-Japanese themes. Features outstanding bright-colored designs with planes, guns, and torpedoes blazing in battle. Box measures approximately 15" x 10". \$120 - \$250

Lot #271 Large Charles Lindbergh 'Lindy' airplane with radial engine. Expertly cast and fragile Hubley plane circa 1929. This large variation uses an aluminum cowl (with proper sticker), iron wheels, and detailed struts. The tires are replaced. The propeller turns when the toy is rolled. Marked NX 211 Ryan NYP. The wingspan is approximately 13" and the body is 11.5" long. The rear X-shaped antenna is still present. Bonus Lindy flying game included. A top-of-the-line Lindy plane. \$620 - 1,050



272

Lot #272 Marx #12 prototype plane with dark wood wheels. Windup works. Marked "ERIE 1/17/41" below and "X-173." Marx logo present below the tailfin. A great piece of Marx history. Wingspan approximately 6". \$250 - \$650



273

Lot #273 White and red China Clipper by Wyandotte Toys. Nose has blended white paint over chips. Nice PAA stickers on the front. All four propellers present with three proper wood wheels. Wingspan approximately 13". \$140 - \$220

Lot #274 Wyandotte Marines-marked plane in green and orange. Steel flywheel airplane by an unknown maker. TWA and Ford tri-prop included by Tootsie Toys. Largest approximately 7.3" x 5.3". \$160 - \$240



274

Lot #275 Well-lithographed Marx toy Lucky Stunt Flyer. The airplane winds up and circulates around a tower, performing stunts. The base features a crowd of observers and autos, while the side litho showcases an airplane en route from New York to Paris. The toy was made circa 1929. Base approximately 6.5" x 3.8". \$200 - \$420



275



276

Lot #276 German toy airplane by TippCo of Germany. This highly unusual model was formerly owned by Tom Sage Sr. and is only the second time we have seen this toy. The fuselage features a simulated wood grain. The windup rolls the wheels and turns the propeller; it works well. The driver is located under the wing. An extremely rare find. Wingspan approximately 6.5". \$400 - \$800



277

Lot #277 Orange USAF pressed steel plane by Wyandotte. A second steel Boeing Stratocruiser is included, featuring a plated silver body and red rudder and tail. Each plane has a wingspan of approximately 12.5". \$170 - \$280

Lot #278 Marx camouflaged plane with driver. Tin somersaulting plane with a working windup mechanism. Features a U.S. flag tailfin variation. Wingspan approximately 7.5". Original and in working condition. \$150 - \$300



278

Lot #279 High-wing Wyandotte propeller plane made from stamped steel, circa 1934. Features original condition with proper hard rubber tires. Wingspan approximately 10". \$120 - \$220

Lot #280 Highly unusual NAT Air Mail advertising plane marked "Kelly's for Drugs Phone 415" and "C 751." Features steel fins, landing gear, and propeller, with wooden wings and fuselage. Excellent condition. Wingspan approximately 7". \$200 - \$400



280



279

Lot #281 Hubley Lindy cast iron airplane in orange and black with the original sticker still affixed to the tail. This toy depicts Charles Lindbergh and his wife in the 1930 Lockheed 8 Sirius, renowned for their record-breaking non-stop U.S. trip in 14 hours and 45 minutes. In original condition with some wear: one tire is missing, the rear landing gear strut is broken, and the fuselage top is loose. Features a spinning propeller with a pull cord eyelet and proper gold highlights. A rare find due to its pull toy fragility and expense. Wingspan approximately 10", length 8.5". \$750 - \$1,200



281

282



Lot #282 Complete balsa Ringmaster airplane kit by Sterling Models of Pennsylvania. Kit S-1 features an impressive wingspan of 42" when built and is designed for engines with .19 to .35 displacement. Includes all original parts, unused with near-new stickers and wood components. One instruction sheet is a copied replacement. A very substantial and top-of-the-line vintage airplane kit. \$140 - \$350

Lot #283 Meccano seaplane built from 'Airplane Constructor' Kit 00 with pontoons. English pressed tinplate seaplane with pilot, circa 1935. A very appealing design featuring a driver and deluxe pontoons. Wingspan approximately 11" and body 10" long. Good used condition. \$200 - \$400

Lot #284 Unusual steel biplane found in South America, with one similar toy painted in silver. Constructed from heavy-gauge steel with a ribbed fuselage. Features a rotating propeller and a wooden tail wheel. Several fasteners are loose or missing. A very heavy and striking toy, considered a true work of art. Wingspan approximately 14" and body 10.5" long. \$170 - \$360

Lot #285 Large Kingsbury red and yellow clockwork airplane made circa 1930. Retains the Kingsbury sticker. The windup mechanism works properly, spinning the tires and propeller. This high-wing toy is exceptionally rare and highly sought after, with a substantial 17" wingspan and a 15" body length. This is the first time this airplane has been offered for sale. \$740 - \$1,200



Lot #286 Red and cream Marx looping plane with driver and wood wheels. The toy flips end over end with impressive rising action. Original example with a working windup mechanism. \$180 - \$250

Lot #287 Very tough-to-find green variation of the Buddy L hangar. The toy features a chipped sticker and working doors. Push down the roof lever to make the doors fly open. Includes only a track inside, no catapult. A beautiful complement to any airplane collection. Toy base measures approximately 12" x 8". \$600 - \$900



288

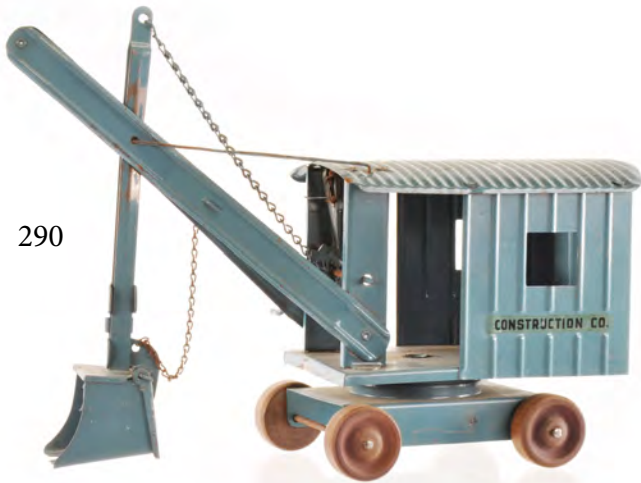
Lot #288 Large Steelcraft Lockheed Sirius in green and tan. This large steel airplane features a twin cockpit and US wing stickers. The Steelcraft stickers are aged but present, along with a good Lockheed tail sticker. The tires roll, and the propeller spins and works. The toy showcases streamlined lines and wheel fairings. Approximately 22" wingspan by 20" long. \$400 - \$800

Lot #289 Stunning large 19" model Jaguar XK 120 by Doepke Toys. This light blue pristine toy, made circa 1955, features rubber tires and detailed parts. It includes a great dashboard sticker and shifter, with a right-hand drive configuration. \$200 - \$550



289

Lot #290 Very clean blue Structo steam shovel. This toy appears near new with some dust. Chains function to open and dump the shovel. Features good Structo Toys and Construction Co. stickers with minor chipping. Measures approximately 14" long by 11" tall. \$150 - \$300



290



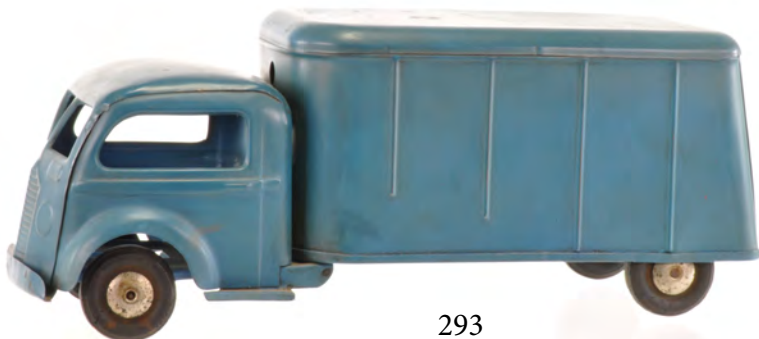
291

Lot #291 Unusual Otaco Canadian truck in yellow marked "Dept. Of Highways 223." This pressed steel toy was manufactured circa 1950 in Orillia, Ontario. A rare and distinctive vintage piece. \$200 - \$400



292

Lot #292 Blue Cor-Cor Toys bus featuring the proper logo and red-centered wheels. This original toy has flaking paint but retains strong, stamped lettering on the sides. Manufactured in Washington, Indiana. Approximately 24" long. \$340 - \$750



293

Lot #293 Seldom-seen blue Keystone box truck, potentially a prewar design released postwar. Original condition. Approximately 11 1/4" long. \$180 - \$240

Lot #294 Black, green, and red multicolor Jumbo Chein toy, circa 1927. This sought-after large-scale pull toy features a proper K-10-30 plate, deluxe headlights, and Hercules-stamped tires marked 35x6. Original condition. Approximately 18" long. \$400 - \$640



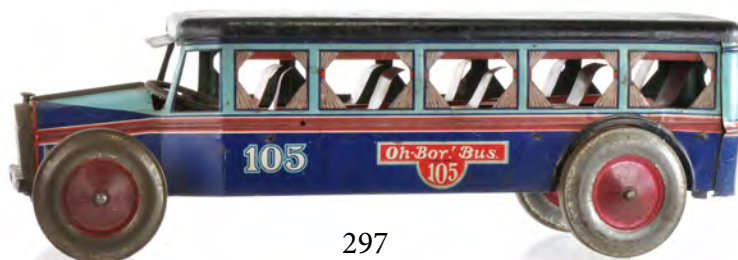
294

Lot #295 Early wood boxed Erector Number 7 set, featuring instructions marked 1929 to build a steam shovel. Includes parts as shown. The heavy wooden box measures approximately 21" long by 8" wide. \$90 - \$300



295

Lot #296 Very deluxe and unusual 4-4-2 hillclimber train from Dayton, Ohio, cataloged as Dayton No. 500 but featuring D.P. Clark design elements. The toy carries a 1909 patent date from the reorganization period. It boasts early, extensive hand-painted detailing, spoked cast wheels, and gold-painted highlights with flourishes. The flywheel is near-new with minimal wear and works well. A rare and remarkably clean 110-year-old steel toy, measuring approximately 24" long. \$180 - \$300



297

296



Lot #297 Large-scale and deluxe Oh-Boy! Bus No. 105 by Kiddies Metal Toys of Plainfield, NJ. This pull toy features a steering wheel, radiator cap, proper wheels, and a front bumper marked "Oh-Boy" on the radiator. It is in scale with Chein Hercules vehicles. One spot on the hood has been overcleaned, but the toy remains in original condition. Approximately 20" long. \$250 - \$600

298



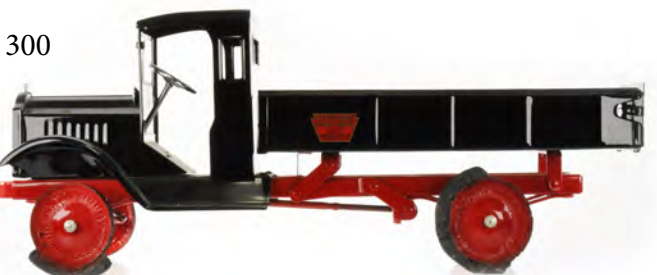
Lot #298 Large Dayton Toy Works coupe in deluxe black, brown, tan, red, and silver color scheme. Cataloged circa 1925 as the No. 500 Large Coupe Deluxe with Gyro motor. This 19" toy features a spare tire and grille-mounted lights, showcasing exceptional original condition. A rare and highly collectible piece from the era. \$350 - \$600

299



Lot #299 Very large 26.8" Packard Open Race Car No. 66 by Turner Toys. Features proper steering wheel, bumper, and a large rear-mounted spare tire. Headlights and emblem are missing, and the tires are likely replaced. A desirable Packard toy circa 1924, over 100 years old. \$320 - 650

300



Lot #300 Crank lift Keystone Packard Dump Truck made in Boston, Mass. Model No. 41 features a front bumper crank lift that works along with functional steering. The toy has been restored and is missing its tires. It includes nice stickers, headlights, a radiator cap, and a turn signal from the door area. The toy measures approximately 26" long and is substantial, made using "Automobile Sheet Steel." \$320 - \$700



301



302



303

Lot #301 Tin windup battleship or cruiser by OroBr of Brandenburg. The toy features gold-plated guns and railings, with one original mast and crow's nest still intact. It works as intended. There is some flaking paint on the left rear side, and it is missing stacks and one mast. Both lifeboats are present. The hull measures approximately 11" long. \$200 - \$400

Lot #302 Sleek Mengel Playthings/Mengel mahogany racing boat, marked "Miss America" with stickers still present. The windup works well, and the toy includes a brass propeller, seating, and a bow cover, though it is missing a steering wheel. Features an unusual wood pinstriped hull variation. The toy measures approximately 12" long. \$200 - 500

Lot #303 Lindstrom working tin ocean liner in black and gold, measuring approximately 10.5" long. Also includes the second Lindstrom Baby 'L' racer with driver, though it is not working. \$120 - \$200



304



Lot #304 Early dual-prop Arnold ocean liner toy, featuring a four-stack variation with a loose upper deck and no mast. The rear windup works. The second Arnold one-stack liner, circa 1950, is a smaller variation with four litho lifeboats and a front maker's mark on the deck. The largest liner measures approximately 10.5" at the hull. \$200 - \$400



305

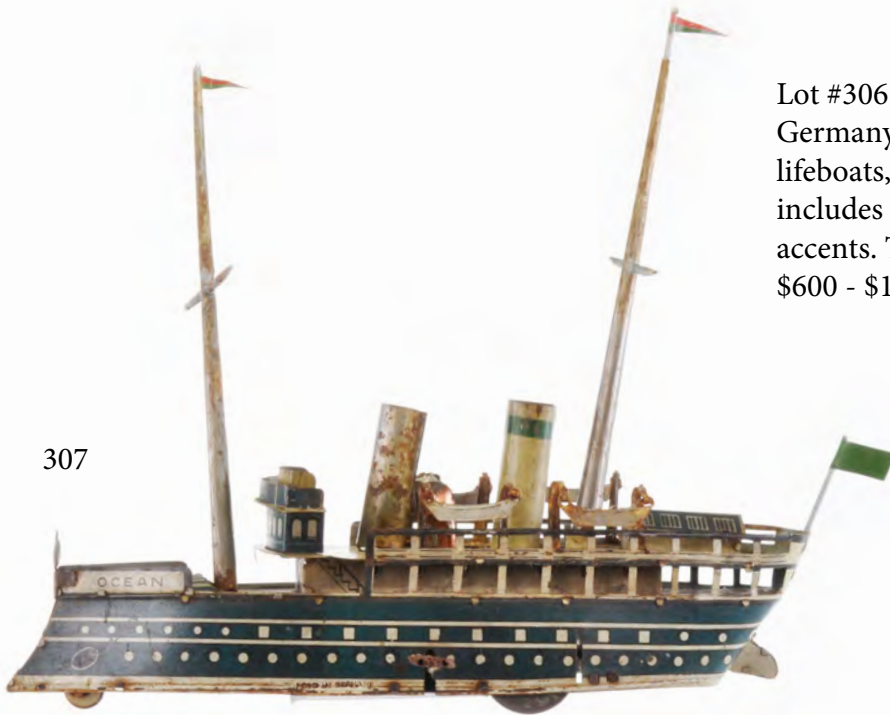
Lot #305 1920s Hess Race Boat Number Seven with detailed driver and steering wheel. The toy has dents on the hull and some corrosion but features a working flywheel. It is marked "Dixie Flyer." The hull measures approximately 11.5" long. \$120 - \$300

306



Lot #306 Working Marklin Victoria Ocean Liner from Germany. This windup toy features twin propellers, lifeboats, and extensive hand-made detailing. It includes intricate mast designs and gold-painted accents. The loose toy measures a massive 39" in length. \$600 - \$1,100

307



Lot #307 Rare G&K ocean liner 'OCEAN' from Germany. This working toy features a flag and masts, marked Gundka 528. One mast and stack are made of natural metal. The toy is marked "Made in Germany." \$340 - \$650

Lot #308 Larger Carette gunboat with front and rear guns to complement a deck gun. The toy features early glossy red hull paint and gold hand-painted highlights. The windup and steering wheel work well. While there is some flaking to the hull, the toy is in overall very good condition. A partial rubber stamp mark may indicate a "Made in Germany" origin. It has the early ram's prow hull design, with the front mast reattached and a replacement flag. This ship is new to the market from an original American family. The hull measures approximately 14 inches. \$700 - \$1,200

308



309



Lot #309 Early Japanese import race boat by ITO, marked S-3. The toy features an unusual steel/tin hull with red, blue, and cream coloration, along with metal emblems and cleats. The toy measures approximately 16" long. \$180 - \$360

Lot #310 Early Bing Toys torpedo boat with twin guns and twin torpedo tubes. The grey original toy features double masts and searchlights. A similar toy to that of the Clauss collection, circa 1920. In working condition, with a length of approximately 16". \$400 - \$800



310

Lot #311 Early circa 1910 Hess windup battleship "Columbia" with cruisers. The toy works well with wave action, though the cruisers are missing flags. Made in Germany, the battleship measures approximately 8" long. \$340 - \$600



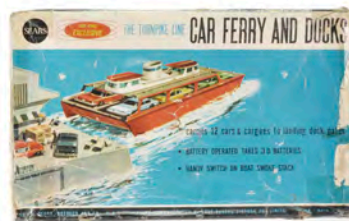
311

312



Lot #312 Circa 1920 version of the warship by Dayton Toy Works. The ship features a friction drive and is hand-painted with red and green wave highlights, along with gold bow and stern shield designs. The friction gyro works well. The ship measures approximately 12" long. \$200 - \$400

Lot #313 Sears exclusive and very rare boxed car ferry and docks, toy number 4213, made in Japan. This large boxed toy is nearly new, measuring approximately 14" x 10" x 8", with tin and steel parts complemented by plastic accessories. It is a rare find that has been greatly enjoyed in setting up and experiencing. Near new condition. \$350 - 700



313

314



Lot #314 Rare clockwork-driven passenger or riverboat, number 1072, by Märklin, Germany. Documented in the 1904 Märklin Catalog E on page 95, this new-to-market passenger boat showcases outstanding original paintwork, labeled as a "High Class Metal Toy." The ship is more original than the Claus riverboat sold in 2012, with stronger details such as window curtains and pinstriping. The "ST. PAUL" is a deluxe two-stack variation with simulated wood decking and original gold railing. Exceptional hand-painted window and porthole accents enhance its elegance. The removable bridge reveals wooden bench seating and passengers. The toy functions with a clockwork mechanism and comes with two original lifeboats. Minor abrasions are present on the hull and stand. The masts are original, with the front pennant flag showing a repaired tear, while the aft US flag appears original. Composition figures are likely replacements. No restoration has been detected. Purchased from its elderly owners, the "ST. PAUL" was kept under glass in its original condition, offering a remarkable and one-of-a-kind find. It measures approximately 26.8" (68 cm) long by 17" tall, significantly larger than similar models. A true beauty in original and excellent condition. \$50,000 - \$110,000



315



Lot #315 We have for you this cast iron "Boy on Trapeze," or "French's Automatic Toy Bank," mechanical bank manufactured by J. Barton Smith Co. of Philadelphia, Pennsylvania. J. Barton Smith made only a couple of banks, including this one and a vault-style bank. This bank works by placing a coin in the boy's hat, which makes the boy tip forward to drop the coin into the base. The premise was that each different coin would make the boy spin a certain number of times based on the weight of the coin. For example, he was supposed to revolve once for a penny, twice for a nickel, three times for a quarter, and six times for a half dollar. This was based on the weight of the coins when the bank was made in the late 1800s. When coin weights changed, the revolutions also changed, leading people to bend the trapeze bar in attempts to remedy this, often breaking the bar or the posts holding it. The boy does make different revolutions based on coin size, and it is very amusing to watch him perform for his wages. The japanning on this Art Nouveau-style base is beautiful, and overall, this is a pretty awesome bank. This is approximately 5" L x 5" W at the base and 9" H. \$500 - \$1,000

316



Lot #316 This is the Tammany Bank "Little Fat Man" cast iron mechanical bank, designed by John Hall for J. & E. Stevens. An authentic antique, it is approximately 120 years old. This variation features a character with black hair, eyebrows, and mustache, a clean flesh-colored face and hands, and a dark blue bow tie, white shirt, yellow vest, black jacket and shoes, and gray pants. The bank sits on a tan "half scallop shell" chair with orange trim. Inscribed on the sides of the chair are "Halls Pat'd" and "Tammany Bank," with "Pat'd Dec. 28, 1873" cast along the back trim. The bank has a weighted mechanism that works as intended. When a coin is placed in the character's hand, it is "pocketed" while the figure bows in a gesture of appreciation. This mechanical action is in excellent working condition. The bank displays original wear, with proper chipping, darkening, and a beautiful aged patina, but is free of cracks and operates smoothly. Please note, it is missing its trap. The bank measures approximately 2.75" W x 4" D x 5.75" H. \$180 - \$325

317



Lot #317 Lot of three ca.1923 Fontaine Fox Toonerville Trolleys. Includes two Dent Hardware slush-mold lead trolleys, each approximately 3" L by 3 1/2" H, with one red trolley missing its top due to the delicate nature of slush-mold lead. the green trolley is missing the wire that stands as its "trolley pole". The third piece is a glass candy container Toonerville Trolley with original cover/lid and faux candy beads inside, measuring approximately 3" L by 3 3/4" H. This charming set is perfect for any fan of Fontaine Fox's Toonerville Folks comics. \$150 - \$250

Lot #318 Save and Smile Money Box, cast iron still penny coin bank attributed to Sydenham & McCoustra or Chamberlain & Hill of England. It is approximately 4 1/4" L x 4" H. \$70 - \$150



318



319

Lot #319 Hubley cast iron No. 826 sitting bulldog bank and cast iron lighthouse still bank, lot of two. The bulldog, in the gray variation with a red collar, measures approximately 4" L x 4 1/2" H. The unmarked lighthouse measures approximately 3 3/4" L x 6 3/4" H. Often also attributed to A.C. Williams. \$200 - \$500

Lot #320 This is a J. & E. Stevens No. 331 "William Tell" mechanical bank. The bank operates by placing a coin on the barrel of William's rifle and pressing his right foot. When his foot is depressed, the rifle shoots the apple off the boy Walter Tell's head. As the coin enters the castle, it strikes a bell, and according to the catalog, a cap can be fired at the same time. This fully working bank includes the trap door and measures approximately 10 1/2" L x 3 3/4" W x 6 3/4" H. \$400 - \$900

Lot #321 Grey Iron Happy Family or American Family Series set of 48 civilians, featuring figures such as sledders, skiers, civilians, Lincoln and military figures, train station characters, and more. Accessories include benches, a goose, and a tree. Each figure is approximately 2 1/2" tall, with two still retaining their original F.W. Woolworth Co. store tags. \$70 - \$150



321



320

Lot #322 Peter's Weatherbird Shoes cast iron still bank and hood ornament, approximately 5 1/2" H. Featured in Susan and Andy Moore's The Penny Bank Book: Collecting Still Banks. Some sources attribute this piece to Arcade Mfg. Co. Freeport, Illinois, circa 1920. We couldn't confirm its maker with certainty but we believe this to be true as well. \$1,500 - \$1,800

Lot #323 Three A.C. Williams cast iron still banks: a clown approximately 6 3/16" H, a gold turkey approximately 4 1/4" L x 4" H, and a horse on tub approximately 5 5/16" H. \$70 - 150



323



324



322

Lot #324 J. & E. Stevens cast iron No. 225 Bull Frog Bank or Two Frogs Mechanical Bank, circa 1880s. Place a coin on the flat spot on the small frog's stomach and press the lever to kick the coin into the large frog's open mouth. Marked with English and U.S. patents from 1882 on the base. Tested and in fine working condition. Approximately 9" L x 3 1/2" W x 4 1/4" H. \$550 - \$950

325



Lot #325 Bear Stealing Pig cast iron still penny bank, approximately 5 1/2" L. Very good original condition. \$200 - 500

Lot #326 Wilton cast iron Amish people two bookends and six various sized figures, all between 3" to 5" H. \$40 - \$100

Lot #327 German paper mache horse candy container, with the head detachable for storing candy inside. The horse is empty and measures approximately 7 1/2" L x 6" H. \$120 - \$340

Lot #328 Cast iron item marked GLA/LGA with a flying eagle. This unmarked piece features a tray and measures approximately 2 3/8" deep. Perhaps it was used as a bookend, ashtray, coin or card tray, or tip tray for a fraternal order. \$100 - \$300



328



327

Lot #329 Shepard Hardware Co. cast iron Trick Pony mechanical bank. It works by placing a coin in the pony's mouth and pulling the lever, causing the pony to deposit the coin into the trough. American (Buffalo, NY, USA). July 7, 1885 patent. Measures approximately 8" L x 2 1/2" W x 7 3/4" H. \$450 - \$800

Lot #330 Lot of 2 cast iron still penny banks: Hubley No. 806 Sitting Rabbit, approximately 4 3/4" L, and a John Wright Co. ca. 1960 Treasury Bank, approximately 3 1/8" L x 3 5/8" W x 3" H. \$100 - \$300



326

329



330





331

Lot #331 Lot of 2 cast iron elephants: Elephant Mechanical Bank, which features a coin drop and a wiggling trunk, unmarked and by an unknown maker, approximately 6 1/8" L x 6 1/2" H; and a cast iron Elephant Doorstop that has been repainted, approximately 9 3/4" L x 5 6/8" H. \$100 - \$300

Lot #332 Cast iron mechanical "Jolly Nigger" bank by Shepard Hardware Co., Buffalo, NY. This vintage bank features a lever-operated mechanism where a coin placed in the hand is deposited as the eyes roll and the tongue moves aside. This bank has been tested and works. The base is marked "Made By Sheppard Hardware Buffalo NY" (very worn). Stands approximately 6 3/4" tall. A classic example of 19th-century mechanical banks. (Sold by Phone or Absentee Bid Only) \$300 - \$700



332



333

Lot #333 Stevens & Brown (later J.E. Stevens) ca. 1872 cast iron toy bookcase, as seen on page 87 of the 1872 Stevens & Brown catalog. This has the shelf inside and looks great for being well over 100 years old. This piece measures approximately 5" L x 3 1/2" W x 8" H. \$200 - \$400

Lot #334 Hoge Mfg. Co. No. 241 Playhouse Kitchen Room tin dollhouse furniture set, including a range, sink, refrigerator, and kitchen cabinet. Each piece features a green finish with a floral design. Sizes range approximately between 5 3/4" and 7 1/4". \$80 - \$160



334



335

Lot #335 Dollhouse miniature salt-glazed pottery lot of 23 pieces, which includes 4 lids. The collection features two J. Clark, Rowe Pottery, Pfaltzgraff, two Estee Lauder, and possibly some Graber and others. Approximately 1 1/4" to 3 3/4" H. \$140 - \$420



336

Lot #336 4-piece lot of Black Americana items: Fred Roberts Company spice rack, made in Japan, with wooden rack and ceramic spice bottles velcroed in, approximately 10 3/4" L x 5 1/2" H; chalkware/plaster twine holder, 4 1/2" H without twine; Fun-To-Wash Washing Powder box, manufactured by Hygienic Laboratories, Inc., Buffalo, NY, empty, approximately 5" L x 7 1/4" H; and Fairbank's Gold Dust Washing Powder box, manufactured by Levar Brothers Co., Cambridge, MA, containing some powder, approximately 3 1/2" L x 4 3/4" H. \$80 - \$200

337



Lot #337 This lot includes: framed sheet music for Hot Lips (A Blues Foxtrot Song) with words and music by Henry Busse, Henry Lange, and Lou Davis. The tune and cover reference the enormous popularity of Louis Armstrong, approximately 12" x 9 1/2"; a vintage 1940s Old Maid Card Game deck, possibly incomplete, featuring cards like "Azz I Said" and "Jazzbo Jackson"; assorted Valentine cards; a party invite; a ceramic saxophone player; and two books, Uncle Tom's Cabin No. 182 MA Donohue & Co. Young Folks Edition and Little Black Sambo 1928 The Saalfield Publishing Co. \$80 - \$170

Lot #338 Black Americana chalkware Kewpie doll baby bank, featuring a tall and charming design. This adorable piece stands approximately 12 1/2" H x 3 3/4" W. \$100 - \$300

338



339



Lot #339 Black Americana pull toy featuring a cloth mammy pushing a porcelain Black baby in a wooden baby carriage. When pulled, the mammy's legs move with the carriage. The wooden carriage has a patent mark on the bottom, though it is unreadable. The face resembles those on Bruckner Topsy Turvy dolls, but none of these dolls are marked, including the porcelain baby. The porcelain baby could use restringing, and the mammy could use restuffing in her arm. This toy is approximately 13" L x 9 1/2" H. \$80 - \$160

Lot #340 Lot of 3 paper mache kittens, including 2 black and 1 white. Each measures approximately 7" H. \$80 - \$180



Lot #341 This is a 13-piece set of vintage Christmas decor, including bobblehead Santas, various other Santas, a molded cardboard standee Santa with a pack, a festive wooden house, a small felt covered package, and a candle music box. \$70 - \$150

341



341B

Lot #341B Set of 2 circa 1920s steel ring puzzle games. The first is a Spear's Wire Puzzles in box, made by Spear Works of Bavaria, Germany. It is a complete set with instructions, and the box is in good condition with corner splits, which is remarkable considering its over 100-year-old age. The second is an A.C. Gilbert Puzzle Party ring puzzle game in box, circa 1921. It is not a complete set, and the box is in less-than-great condition. Both come as shown. \$100 - \$300



342

Lot #342 Vintage Walt Disney's Mickey, Minnie, & Pluto Musical Jewelry Box made in Japan and stamped "Walt Disney Productions Made in Japan" on the bottom. The drawer has all of its red felt, though one drawer stay has come loose but is included. Mickey's tail and Pluto's tail have been replaced. It is approximately 10" L x 7" W and is wound by turning Mickey and Minnie's pedestal around and opening the drawer to play the song. The song could not be identified, but it plays strongly. \$80 - \$160

343



Lot #343 Vintage Walt Disney Character Pull and Windup Toys featuring Mickey, Minnie, Dumbo, and Donald. Most of these toys are pulled along to walk, with the exception of Minnie, which is wound up. They all work. \$100 - \$200

Lot #344 This is a set of 2 European wooden horses on platforms with wheels. Both horses have real horsehair tails, while the smaller horse has a rabbit fur mane, though very little of that remains. The large horse is approximately 8 1/2" L x 2 3/4" W x 8 1/4" H, and the small horse is approximately 8" L x 2 1/4" W x 8 1/2" H. \$70 - \$200



344

345



Lot #345 This is a large wooden furniture transport delivery wagon with a horse. On the side, it reads "Möbeltransport, Deutsche Exp Gesellschaft für Land & Eisenbahn" ("Furniture Transport German Society for Land & Railways"). The horse is wooden and felt-covered on a rolling platform, with a fur mane and tail that are very worn. The wagon and horse together are approximately 28" L, with the wagon and hitch measuring approximately 26" L x 7" W x 10" H, and the horse measuring approximately 13" L x 5" W x 13 1/2" H. We have seen it mentioned that this could be manufactured by Flemming & Co. of Globenstein, Ergebirge but we have no way of confirming this. \$140 - \$300

Lot #346 Genola toy phonograph by The General Phonograph Mfg. Co., featuring green pressed steel with images of Humpty Dumpty, Jack Horner, and Mother Goose. It includes a Spear Records record and is untested. This toy is approximately 9" L x 6" W x 9" H. \$100 - \$200

346



347



Lot #347 The Garford Mfg. Co. "Baby" Child's Phonograph Toy has some surface rust inside and is untested. It comes with 3 records from Little Wonder, including No. 494 "Honolulu," No. 505 "Home Sweet Home," and No. 946 "Calendar Song." \$100 - \$200

348



Lot #348 Swiss Wood Music Box Cylinder Player, we think this is a great little music box. We don't recognize the tune and aren't familiar with these types of music boxes, but we know we love them. This is tested and works. It is approximately 12" L x 5 3/4" W x 4 1/2" H. \$300 - \$850



Lot #349 Davy Crockett ca. 1950s set of four wallets and three rings. Includes one Walt Disney Official Davy Crockett button-close wallet with fur hat, one Tennessee souvenir fold wallet, one zipper wallet, and one fold wallet. Also includes three Cracker Jack/premium cereal box rings, each featuring Davy Crockett's face. A nostalgic collection of vintage Davy Crockett memorabilia. \$100 - \$175

350



Lot #350 Grouping of 4 ca. 1950s items. Includes one rare green Blondie comics zipper wallet showing Dagwood being chased by dogs, with edgewear on the spine from being well-loved, but considering its age and rarity, this can be forgiven. Also included are two G-Man detective badge Cracker Jack/cereal box prize rings and one super fun Japanese Cracker Jack premium elephant siren whistle ring with well-aged patina. \$100 - \$175

351



Lot #351 Grouping of 6 items from the 1940s and 1950s, including a Roy Rogers and Trigger 1949 Quaker Oats Cereal Premium Microscope Ring, a 1949 Roy Rogers & Dale Evans Sky-King Peter Pan Peanut Butter Premium Electronic Television Ring, a 1940s Ralston Straight Shooter's Genuine Gold Ore badge with gold ore in a bubble, a 1941 Tom Mix Straight Shooter's of America Decoder Ralston Cereal badge, and a Captain Midnight Secret Squadron premium Code-O-Graph decoder pin badge. \$120 - \$200

352



Lot #352 Lot of 7 1940s-1950s Cowboy Western-themed items, including a Cheerios premium cereal 1948 Lone Ranger film strip viewer ring, a Cracker Jack premium prize silver Western saddle ring, a 1947 General Mills premium Kix Cereal Lone Ranger six-shooter ring, a bullet with "Lone Ranger" inscribed on the side, a fold wallet possibly from a Lone Ranger dress-up set, and a Western Sling Shot game on card made in Japan. A nostalgic set for collectors. \$120 - \$200

Lot #353 1940s-1960s lot of 4 premium brand and Cracker Jack prizes, including one 1950s Sky-King's Tele-Blinker Peter Pan Peanut Butter premium ring in excellent condition, two 1949 Peter Pan Peanut Butter premium Sky-King Magni-Glow Writing Rings, and a 1960s Cracker Jack James Bond 007 gun ring. A fantastic grouping of vintage collectible premiums. \$75 - \$150



353

Lot #354 This set of 5 Lone Ranger premium cereal prize items includes a variety of rare and sought-after pieces. Featured is a Cheerios premium cereal Lone Ranger Flashlight Signal Ring from 1948, complete with light and the rare contact wire. Also included are a 1947 General Mills premium Kix Cereal Lone Ranger six-shooter ring, and a 1947-early 1950s General Mills premium Kix Cereal Lone Ranger Atom Bomb "Spinthariscopes" ring, which is missing its back red bomb fin. The collection also features a Cheerios premium cereal 1948 Lone Ranger film strip viewer ring, and a vintage Lone Ranger television set pin back pin from the era. A fantastic assortment for collectors of Lone Ranger memorabilia or cereal premiums. \$145 - \$270



354

356



355



Lot #355 1950-60s Charlie McCarthy ventriloquist doll with a cloth body and vinyl hands/head. Dressed in a black tuxedo and white shirt, with a felt hat and monocle. Includes the original box and paperwork, in excellent condition. Made by Juro Novelty Co. Approximately 30" long. \$150 - \$500

Lot #356 A rare and decorative German eye-catcher for the Christmas holiday. The stand is designed to hold a tree and rotates while the music plays. It features a beech veneered calliope box with bronze fittings. Inside the music mechanism is one disc, "Silent Night," by composer Franz Xaver Gruber. The music is activated by winding up and pulling the lever out. On top of the box is a cast iron vase with a Victorian feather-style Christmas tree adorned with tinsel, a few balls and berries, and a porcelain-faced Santa at the top. The tree spins slowly during play. Includes a wind-up key and all screws to securely fasten the tree. Completely working and powered by winding it up with the handle on the front. The stand measures approximately 17" L x 11 1/4" W x 12 1/2" H, and the entire piece, up to the tip of Santa's hat, is 47 1/2" H. \$1,500 - \$2,900



357

Lot #357 Early Kenton Toys cast iron road cart, Number 20, features the original top-hat driver and a detailed horse with its delicate front "wheel" intact. It is approximately 7 1/2" long. \$120 - \$220

Lot #358 Original orange Hubley motorcycle with proper hard rubber tires, paired with a cast iron speedboat pull toy. The boat includes a rider and a cast outboard motor. They are both approximately between 3"-4" long. \$110 - 220

Lot #359 Orange "Baby" speedboat by Hubley and red motorcycle, both original with original paint. The speedboat features proper wheels and an outboard motor, circa 1930. The motorcycle includes a cast-in cop rider. The speedboat is approximately 4" long. \$120 - \$220



358



Lot #360 Arcade cast iron green truck with original tires and a clean trailer featuring proper red paint. Includes a red Auburn Rubber car. The set is approximately 14" long. \$160 - \$220

359



360



Lot #361 Diminutive Hubley horse-drawn circus cage with a tiger. This smaller version, approximately 8" long, of Hubley's Royal Circus cage includes a tiger, proper gate, and driver. The horses are intact with no cracks or breaks. \$220 - \$420



361

Lot #362 Large four-car hauler by Arcade Toys with Model A Fords. The tractor features the proper door sticker and original paint. The trailer is complete with plated wheels, and all four cars have door stickers and proper wheels. The cars are free of breaks or cracks. A very nice, original, large Arcade Toys set, approximately 24" long. \$750 - \$1,200

362



363



Lot #363 Very large Dent cast iron fire tower. The nozzle is present along with the tower ratchet. Comes with three original horses. The white tower shows typical white flaking and possible overpaint, and the set includes a replaced driver. The set is over 24" long. \$450 - \$800

364



Lot #364 Fire Chief cast iron Model A by Arcade and Ironman. The toy features custom cast-in lanterns, a toolbox, and a searchlight. Ironman perfected the Model A for Fire Chief use and livery. It is approximately 6.8" long. \$300 - \$600

365



Lot #365 More challenging to find Kenton Toy circa 1910 with riders. Cataloged as number 775. The horses are proper and the paint is original. The front wagon wheels and hitch connection have been repaired. Comes with a kid-braided pull cord. The toy is approximately 14.5" long. \$300 - \$600

366



Lot #366 Hubley eight-post stake truck with original rider and wheels. The stake truck is yellow with earlier flat wheels. The driver is glued in. Toy is approximately 11" long. \$150 - \$300

367

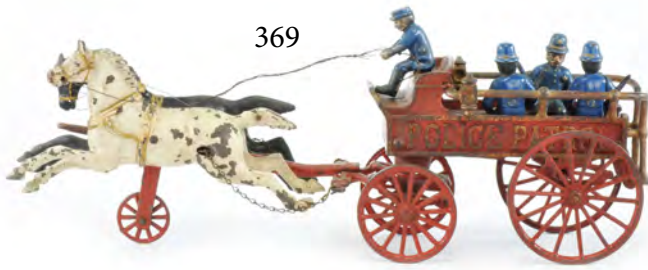


Lot #367 Popeye, Olive Oyl, and Wimpy cast iron set by Hubley Toys. Late 1930s toy with original paint and chipping. A fun full set of comic character toys. The largest is approximately 3.3" tall. \$200 - \$400

Lot #368 Cast iron Red Devil (car type) open touring with lady. Larger toy cataloged by both Kenton Toys and Jones & Bixler circa 1905. Four lantern toy with tiller. Proper red paint with silver highlights. Toy is approximately 8.5" long. \$250 - \$550



368



Lot #369 Large horse variation of the Kenton Police Patrol at 19" long. Drivers are replaced. Railing is proper with twin lanterns and free of breaks. Clean and large horses on this model, prancing at approximately 9.2" each. \$300 - \$600



Lot #370 Cast iron pull toy from the well-respected Kyser & Rex circa 1880. The toy monkey appears to be a thinly veiled Confederate soldier. Wheels are likely from J.E. Stevens with heart designs. The bell toy works with alternating hand strikes. Condition is good with play wear on high spots and wheels. Bell fasteners have been replaced. Toy is approximately 7" L with hitch and 5.5" H. \$300 - \$600

Lot #372 Patented 1881 horse and dump truck set. Carpenter did an outstanding design job on this toy, with a removable horse for play, which can be put back and made to gallop. The pull toy has a wheel and cam system that lifts and lowers the horse's back leg. The horse is free of cracks and breaks. The dump lever and cam are wrapped in wire. The cam works well, making the horse gallop. No driver; earlier hook-on rider design. The toy is over 12" long. \$220 - \$420



Lot #371 Yellow Cab Co. with hand-lettered "Main 375." The Yellow Cab Co. marking is likely period-done aftermarket. The grill has been replaced. The toy shows wear but is the larger 9" size with a driver. \$240 - 500

Lot #373 Loved pachyderm and express cart with Egyptian driver by Kenton Toys. Circa 1905, this toy is original with proper wheels and working mechanism. The rider and elephant show chipping and play wear, but the paint remains original and proper. The elephant's tusks are still present, and the toy features some gold and black hand-painted highlights. It is approximately 10" long. \$340 - \$700



Lot #374 Largest variation of the Hubley Bell Telephone truck. The toy has original rubber wheels with aging and retains its original green, gold, and flesh-colored paint. It features nice ladders and a trailer with a log. One pulley arm finger is broken, but the truck appears free of breaks or cracks. This outstanding cast iron toy includes a nickel-plated water cooler on the running board. It is approximately 12" long with ladders. \$370 - \$650



375



376

Lot #375 Set of two Diamond T fire trucks, circa 1938. Both toys feature original rubber tires and proper plated grills. The ladders and bumpers are original. It's a treat to find both of these toys together in excellent original condition. Each is approximately 7" long. \$300 - \$600

Lot #376 Glossy red Fire Chief by Arcade Toys. The toy retains its gold bell and highlights, with proper wheels. No cracks or breaks detected. It is approximately 5" long. \$320 - \$650



377



378

Lot #377 Friedag taxi in orange and black, with a replaced spare. Features a cast-in driver and original disc wheels. The toy is in original condition and is very challenging to find. It is approximately 7 1/2" L. \$280 - \$500

Lot #378 Large-scale cast iron thresher by Arcade Toys. This stickered example is complete with a nice spring belt and both spouts. The sheet metal hopper and wire pull hook are proper. An excellent-condition Arcade farm toy in a larger 12" L x 8" W x 4" H scale. \$340 - \$650



379

Lot #379 Dent taxi in grey and black. The thick glossy paint shows proper edge sagging and age. The screw on the spare has been replaced. The disc wheels have very light edge abrasions consistent with age and almost no use. The seams are extremely well-fitted, and the black paint has a deep, dark pigment with a lustrous finish. The toy is approximately 8" L. \$600 - \$900



380

Lot #380 Very clean and original Arcade Toys #2 Yellow Cab Taxi. The toy has bright white tires with much of the original paint intact. The original screen and proper silver headlight accents are present. The driver is correct, with a plated orange-banded hat. The door stampings are very clean and strong. The toy is approximately 7.7" L. \$350 - \$600

381



Lot #381 Cast iron Harley Davidson appears to be a clean and original Hubley casting that was restored. The custom paintwork is outstanding, with cream paint insets, gold striping, and silver accents. The rider is dressed in racing leathers and a leather skull cap, typical of the 1930s style. A beautiful custom iron toy, approximately 9" L. \$300 - \$600

382



Lot #382 Beautiful and very early, circa 1880, Welker Crosby cast iron oxen. The toy features wooden collars and an intricate hinged double tree for pulling. The cart has unusual tiedown straps and a tailgate. The toy is approximately 11.2" L. \$400 - \$700

383



Lot #383 Eccentric wheel Harris toy with galloping action. The ox cart comes with a black driver and hay bales. Black wheel pinstriping is still present, along with red donkey accents. A clean and early toy at approximately 11" L. \$420 - \$720

384



Lot #384 Wilkins cast iron and steel fire ladder truck with three horses. The toy comes with the more deluxe 3-horse arrangement and three proper yellow ladders. It is approximately 26 inches long and includes drivers. \$400 - \$700

385



Lot #385 Silver and red painted sulky by A.C. Williams. A very clean example of a 1920s toy with cast-in rider and proper red wheels. The toy appears free of cracks and breaks. It is approximately 8.5 inches long. \$150 - \$220

Lot #386 Early Arcade Toys stake truck circa 1923, Heavy Toy Dray. The toy comes with a proper plated driver and twin horses. It is lightly restored, with a repaired front tree and blended red paint. We have not had another example; Al Aune's book didn't even have a picture of it, only an illustration. The toy is approximately 13.5 inches long. \$300 - \$600



Lot #387 Early Dent-designed wagon with curved decorations in pastel pink and a green-painted roof. The toy features a two-horse front end with black horses. It is approximately 10 inches in length. The toy shows good used condition with chipping and wear, reflecting its age of nearly 115 years. \$140 - 220



Lot #388 Kenton Toys cast iron circus wagon. The toy features a working back gate, a proper driver, and a white iron polar bear. The horses are missing rubber tires but retain the original chain, with well-preserved white and gold paint. \$140 - \$240



Lot #389 Early Arcade Toys bowling game with period pins and shooting bowling gun. The metal ball is present, but one pin is missing, and the toy features the Arcade Toys sticker. A true toy for play fun. Lanes are over 36 inches long. \$170 - \$240



Lot #390 Boxed interchangeable body cast iron set by A.C. Williams of Ravenna, OH. The box illustration is outstanding, featuring a young boy and girl playing with a set of Williams cars, trucks, and planes. The toy comes with a patented spring clip to swap bodies from a truck to a sedan to a roadster. The toy is proper and original. The box has two split ends, but is otherwise a great survivor, as most were discarded. The boxed set measures approximately 11 inches by 6 inches. \$320 - \$650





391



392



393

Lot #391 Oversized Dent Hook and Ladder with three horses. Each horse weighs approximately one pound of cast iron and measures a giant 10" in length. The wagon has a replaced yellow ladder. The wagon is an immense 34" long. \$900 - \$1,600

Lot #392 Large Ives cast iron Fire Patrol wagon with twin horses. This is a larger set than typically seen and extremely difficult to find. The toy features a large truck, six firemen, and a driver. The paint has been expertly restored, likely keeping the figures original. The horses have a galloping action and are a very large 9.5 inches in length. The set is approximately 22" L. \$1,050 - \$1,700



394

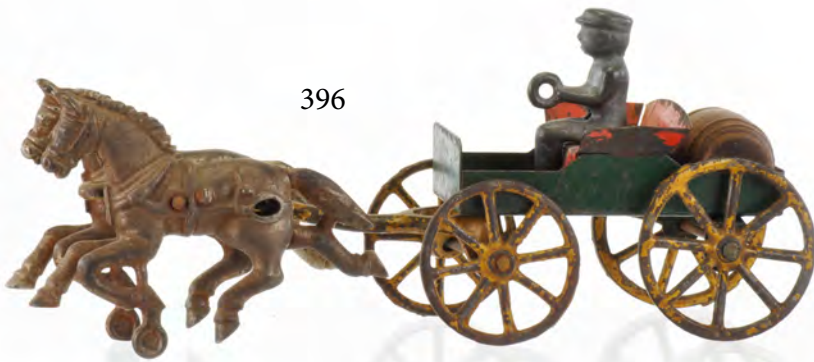
Lot #393 Iconic Ives eagle fire engine with pumper detail and twin black horses. The toy is marked "PHOENIX" on the double tree and includes a driver plus an aft fireman. The eagle has been replaced, but otherwise, this is a very impressive and original toy by the premiere maker, Ives Toys. It is approximately 19" L. \$750 - \$1,100



395

Lot #394 Cast Iron Kenton Toys Overland Circus with twin white horses. Circus Cage 231 comes with proper driver and animal, even wax packing paper. Wheels and toy appear unused. The box is approximately 13" x 6.5" x 4". An amazing find! \$300 - \$700

Lot #395 Hubley blue and gold Royal Circus wagon with driver. Replacement bear and proper iron gate in the back. The toy is in good used condition with original paint. It is approximately 8.8" long. \$180 - \$220



396

Lot #396 Cast iron two-horse delivery wagon with driver and barrel. The toy features plated double horses with cast-in front wheels, attributed to Hubley Toys. The proper tin wagon comes with a barrel and driver. The toy is approximately 9.5" long. \$120 - \$220



397

Lot #397 One Horse Ice Wagon, Number 643. Cataloged circa 1924, this toy features clean original green and black paint with contrasting yellow wheels. It is approximately 8.5" long. \$120 - \$220

Lot #398 Hubley Hansom Cab, cataloged as Number 625, circa 1920. This toy features a blue cab with silver six-spoke wheels and highlights. The horse is black with strong gold accents. The toy is approximately 7.5" long. \$120 - \$200



399



398

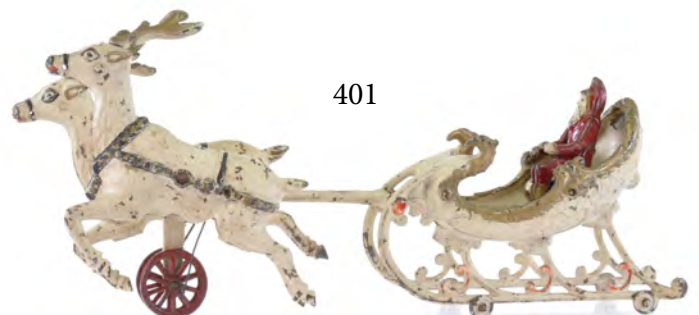
Lot #399 This early, circa 1909 taxi cab was marketed by both Kenton and Jones & Bixler. The toy features a nice lady and driver in original paint, with strong gold headlight highlights and yellow wheels. The steering wheel has been replaced. The toy is approximately 7.5" long by 4.5" tall. \$400 - \$650



400

Lot #400 Early and intricate Ives small hook and ladder brass pattern, circa 1885. The detailing in the casting is extremely crisp, showcasing fine craftsmanship. The trailer measures approximately 9.8" long. \$250 - \$600

Lot #401 Cast Iron Santa on two reindeer sleigh by Hubley, Number 773. This toy features proper and original white paint with red and gold highlighting. The reindeer bells are hand-painted in black and gold, and the delicate antlers are original and free of cracks or breaks. While white paint is fragile after 100 years, this example is in very good, if not excellent, condition. Cataloged in 1924, the sleigh is approximately 17" in length. \$750 - \$1,400



401

402



Lot #402 Late 1930s Arcade wood service station in white and green. Great backdrop for your Arcade Toys with door and side opening garage. Bits of chipped sticker above door. Just the building included. Approximately 12" L x 6" W x 6" H. \$200 - \$400

403



Lot #403 Cast iron circa 1890s Hansom cab with driver. The toy features a driver in yellow and blue with a black hat. The horse is caramel with a white blanket. Twin lanterns are present. It is approximately 12.5" L. \$300 - \$620

Lot #404 Hubley circa 1920 transitional fire engine with driver and disc wheels. A nice early cast iron toy at approximately 10" L. \$200 - 440

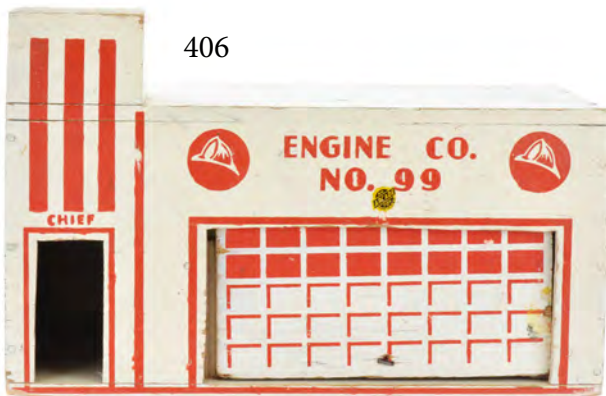


404

Lot #405 Large Hubley cast iron fire engine with nickel boiler and two men. The toy features three horses and twin hoses. It is a clean example that appears original, approximately 21" L. \$500 - \$900



405



406

Lot #406 Arcade wooden Engine Co. 99 building with garage. A nice 1930s wooden building featuring a moving door. No finals included; just the building as shown. It is approximately 12" L x 8" W x 6" H. \$200 - 400

Lot #407 Early ca. 1910 Kenton Toys fire engine with three horses. A very tough variation to find in yellow with this horse combination. Original yellow toy with silver and black horses. Deluxe gong present without wire striker. The driver is an amazing find and a rare variation. The toy is approximately 21.5" L. \$640 - \$1,100



407

408



409



Lot #408 Sought after large Red Baby I.H. with plated driver and Weaver boom. The toy has proper chain, hook, and supports on the Weaver boom; "WEAVER" is well marked. Great door stickers and nice red rim insets. A superb original toy circa 1925, approximately 12" L. \$600 - \$850

410



Lot #409 Early Anchor Truck brand cast iron by North and Judd. Nice original stake truck with an early Model T truck design and driver. Plated wheels and proper opening tailgate. Wear to the toy, but a tough truck to find in this original condition. The toy has play wear to high spots with no breaks or cracks detected, approximately 9" L. \$420 - \$680

411



Lot #410 Early International Harvester Red Baby truck with dump bed. Ratchet, stop and lift work well. Good door stickers and nice original wheels and paint. A desirable Arcade Toy in great original condition circa 1925, approximately 10.5" L. \$400 - \$800

Lot #411 Original example of the Gumpmobile with Andy driving, featuring hand-painted accents. Bonus Andy Gump game included with bright graphics. The 348-marked car has plated wheels and a radiator. Nice green with proper painted wheel insets. Car at approximately 7" L by 6" H. \$450 - \$900

Lot #412 Grey Iron Toys nickel-plated iron penny or prize package toys, including guns, a plane, and vehicles from sets 6N and 7N, ranging in size from approximately 1" to 2 1/2". The included bronze keychain pistol is not believed to be from Grey Iron, but is also considered a prize or penny toy. This collection features small, detailed items ideal for collectors of vintage miniature toys. \$90 - \$200



412

413



Lot #413 Red Ice Truck by Arcade Toys circa 1930, number 227. A challenging toy to find in medium size, it was released during the heart of the Great Depression. Paint and wheels appear proper and original. Two ice cubes are included. Toy at approximately 8.5" L. \$240 - \$520

Lot #414 Red, green, and black P&L stake truck with wood bed. A very nice original toy with delicate stakes intact and two black horses, along with a proper iron driver. Dual rear stakes and chain present. Bonus cotton bale included. Toy at approximately 16" L. \$740 - \$1,100



414

415



Lot #415 Olive steam roller by Hubley Toys. Replaced driver. Original chains and plated wheels. Grader and gold highlighting present. Toy at approximately 7.7" L x 5.2" H. \$210 - \$420

Lot #416 Black Model T by Arcade Toys, circa 1924. Early Ford in two-door variation with driver. Gold band highlights present, with proper silver-painted headlights. Toy at approximately 7.5" L. \$200 - \$400

416



416B

416C



Lot #416B Nice gray Arcade Toys thresher with play wear. Missing the front chute and belts, but both exit chutes are present and original. In good used condition. Toy measures approximately 12" L with a tow hook. \$180 - \$300

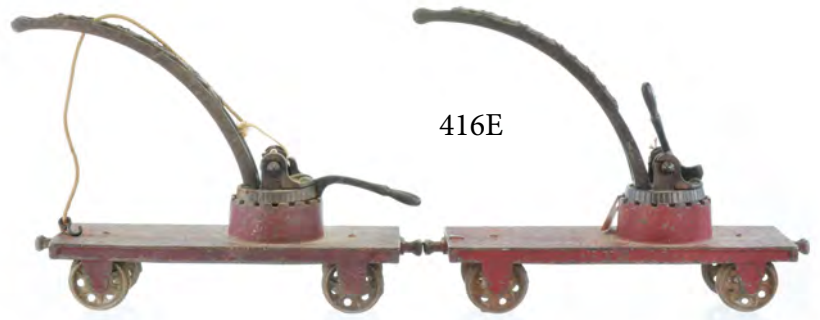
Lot #416C Early circa 1900 cast iron horseless carriage in original green with yellow highlights. The driver is proper with a cap, and traces of gold remain on the spokes. A proper and early cast iron automobile. Toy measures approximately 6.2" L. \$400 - \$750

416D



Lot #416D Early automobile toy by Hubley Toys. This circa 1915 runabout features a proper and rare original driver. The wheels are correct with red paint, and the toy remains in original condition. Toy measures approximately 7.2" L. \$170 - \$320

416E



Lot #416E Two unusual Arcade Toys cranes, circa 1902. The "Toy Wrecking Car" or train car is large, measuring approximately 13.5" x 8.2". Both toys appear original, with a lever to move the tower right and left, then lock into place. The wheels move as well. A nice original set of early iron toys. \$200 - \$400

416F



Lot #416F Steel and cast iron Wilkins fire engine in yellow. The toy comes with a proper driver, red-painted wheels, and a double tree. The gong and rear wheels work well. This larger-scale toy measures approximately 19" long. \$220 - \$550

417

Lot #417 Very large Express Train No. 7103 by Marusan, featuring a 2-6-4 wheel arrangements with a matte paint finish and plated parts. Includes a built-in tender and working friction drive with functional drive shafts. The headlight stamping is intact. Comes with a partial box displaying red, yellow, and black graphics. The toy is near new and measures approximately 18" L. \$180 - \$400



418



Lot #418 Japanese tin tow truck and U.S. mail truck by SSS. The tow truck features detailed lithography and measures approximately 7 3/4" L. The U.S. mail truck has working back doors and displays a 'Give to Red Cross' stamp ad banner. It measures approximately 8" L. Both toys are in excellent condition. \$120 - \$300

419



Lot #419 Lot of two trains. The first is a Disney windup train with hinges and colorful character toy graphics by Marx of Japan, measuring approximately 12.2" L. The second is a Takatoku train from Japan, featuring a bell and windup action, marked 8400 Express. \$120 - \$240

420



Lot #420 Arrow #37 Marusan boat, measuring approximately 10.7" L, with windup action that works properly. The second race boat, 'Sea Bear,' did not work when tested but comes with great race fins from 1957. The battery compartment is clean. \$200 - \$400



Lot #421 Fun-sized Pontiac toy from Occupied Japan with box. The car is made with glossy blue and shiny plated metal. The windup works well, and the tin car bottom and wheels appear unused. The box shows shelf wear and is missing one flap but is otherwise in very good original condition. The toy is near new and measures approximately 3.5" L. \$120 - \$200

421



Lot #422 Hand-painted 1950s cowboy and cowgirl windup toys, each made in Japan from wood with detailed painting. The windup springs work but are weak. They each measure approximately 8" x 7.5". \$100 - \$220

Lot #423 Japanese tin Mercedes, made by SSS of Japan, red and black with a yellow interior. The toy shows some spidering of paint behind the convertible cover. The friction drive works well, and the bottom of the toy and windshield are clean and near new. It is approximately 9" L. \$120 - \$250

Lot #424 Tin race boat R-26 and lady skier by T.N. (Tin Toys Nomura), Japan. A fun toy where, when pushed across the floor, the lady moves back and forth, simulating skiing. The R-26 driver features the proper visor and helmet. The boat bottom shows some play wear, but overall, the toy remains very clean and in great condition, representing 1950s Japan. It is approximately 7" L. \$170 - 350



422

Lot #425 Large-scale 'Giant' train by Gamachi, patented, featuring imaginative lithographs of cowboys and eagles on the side. Marked with C 6238 along with GIANT, COAL, and WATER. The friction drive works very well, producing a siren sound and a semi-realistic creaking metal-to-metal drive shaft noise. This short-stack style train includes detailed parts and a lithographed headlight. The box shows chipping and shelf wear, but the toy itself is in near-new condition. The train is a larger tine toy at approximately 16" L. \$150 - \$300



426

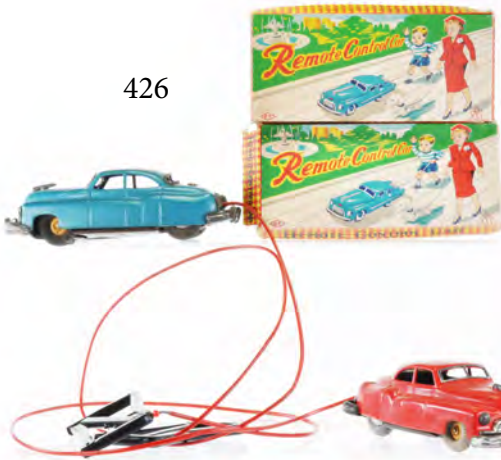


425



424

426



Lot #426 Set of two remote-controlled cars in near-new condition, marked by F.T. and Yonezawa of Japan. The set includes a red and a blue tin car. The 'remote' control is designed to sway the car left and right, then squeeze the handle for power. The cable inside the sleeve is stiff, and we were unable to get the drive to work; it may just need lubrication. The toys come with boxes and even hyper-thin post-war paper instructions, featuring kid and mom illustrations—quite fun. \$180 - \$400

427



Lot #427 Immaculate fastback car toy from Occupied Japan, reminiscent of a 1952 Chevy fastback tin toy. The windup works, and the car is near new with remnants of tissue paper still inside. The box is extremely fragile, with partial skirts and a nice label marked with "S" and "RED" on the top. Box measures approximately 6" L. \$160 - \$320

428



Lot #428 Set of 4 vintage celluloid toys, most marked Occupied Japan. Includes a beautiful Scotty dog and tin shoe windup with working fidgeting action, approximately 8" L. A translucent yellow and pink terrier with working tail-wag and head-bobble action, approximately 5 1/4" L. A Santa with white reindeer sleigh windup, weak but partially functional (feels overwound but will turn the wheels and ring the bell if you tap it), approximately 8" L. The baby is a cute moving armed toy with bright red highlights and a clean face, the strings are a bit loose, she is approximately 3 3/4" H. No celluloid cracks or breaks detected. \$180 - \$340



429



Lot #429 Desirable gold Avanti with numerous nickel-plated accessories #940 by Bandai. The interior is detailed with red and white lithography. This Bandai toy is near new and comes with its box, though the box is missing one end. The car measures approximately 8.2" L. \$180 - \$300

430



Lot #430 Two celluloid toys with great action—one Xylophone player and another cowboy with lasso. Each toy works, and their condition is good original. Both stand at approximately 6" H. \$120 - \$220

Lot #431 Yonezawa of Japan ca. 1950s Marshall Wild Bill, tin, battery-operated 2-gun Cowboy figure in denim jeans, cowboy shirt, red tin cowboy hat, plastic guns, and remote control with cable attached. This is tested and does not work, but the lithos are clean and bright with minor scuffing. It is approximately 11" H. \$165 - \$200



431

Lot #432 Linemar/Marx ca. 1950 Japan battery operated Sleeping Baby Bear. All original, tested not working. No Box. Approximately 9 1/2" L. \$145 - \$200

Lot #433 Iconic Herbie the Lovebug style #53 White VW with racing stripes. This toy works well with flashing lights, moving action, and a 'no-fall' drive. It includes instructions and is a highly detailed Volkswagen with tin headlights, caps, logos, and interior. The car measures approximately 9.5" L. A fun near-new toy circa 1968 by Taiyo, Japan. \$200 - \$400

Lot #434 Near-new Japanese car by C.K. of Japan. This Graham Paige features an automatic stopper and comes with its original box. The windup key is still attached with rope and a 'KEY' tag, and tissue paper remains in the box. The windup works well, though one end flap has a tear. The car also has adjustable steering and a spare. It is immaculate and measures approximately 6" L. \$240 - \$600



432

433



434

435



Lot #435 Multicolor and large Taiyo VW Love Bug C-633. This larger boxed version of the VW toy features bump-n-go action, working lights, and proper movement. The toy operates as intended and comes with its original box. The box measures approximately 11" x 5.5". \$200 - \$400

436



437



439



438



Lot #436 Tin litho Betsy the Hungry Bug lovebug set of two with eating action. Haji made this toy for the U.S. under the Frankonia brand. The antennas move, and the wheels turn properly. Bagged 'Food' beads are included with the boxed toy, and the eating action works. Two toys are included, each measuring approximately 6.2" L. \$140 - \$200

Lot #437 Great skating action windup toy by T.P.S. of Japan. To Play made this patented design that works very well; it skates in a turning fashion with bending leg skating action. The toy works well and comes with its original silk clothing. It stands approximately 6.3" tall. \$150 - \$300

Lot #438 Near new 1950s red truck with logs, marked Linemar, part of Marx Toys distribution, and in extra clean condition. The logs are secured with springs and all are present. The friction drive works and the bumper remains bright and shiny. The box is crisp and near new. The toy is approximately 6" L. \$100 - \$220

440



Lot #439 Boxed near new Stunt Mustang by T.P.S. in patriotic red, white, and blue. The toy comes with a near-mint, bright box. The hood lifts up to reveal a litho engine beneath. This is the earlier deluxe version of this circa 1969 Mustang. The box is approximately 11" L. \$200 - \$400

Lot #440 Interesting helicopter plane by Alps of Japan. This tin toy works by spinning the prop and rolling; it runs, though the gearing sometimes sticks. There is light chipping on the paint, as shown, but it remains a rare find. The second item is a Japanese copy by M.T. Masudaya Toys of a Gama mini-tank. An interesting toy with proper treads, though the gearbox is seized. The largest toy measures approximately 6" L. \$160 - \$320



Lot #441 Beautiful and colorful Studebaker pick-up truck, made circa 1954. This tricolor toy features shiny hubcaps and a grill. The toy has a professional repaint to the dark blue. The box is a professional reproduction, depicting a farm scene with a rancher and livestock. The toy measures approximately 10" L, and the friction drive works well. \$220 - 420

441



442

Lot #442 Wilkins No. 750 Automobile Fire Engine patented 1905. All steel boiler and partial rubber tires. Replaced driver and steering wheel. Very good to excellent original paint with hand painted accents. Gong works, but windup spring not engaging. The toy measures approximately 9.7" L. \$200 - \$450

Lot #443 Mechanical Dream Land Bus in Magic Tunnel toy by TPS, Japan. A near mint boxed toy with a subtle Disneyland/Disney World theme. The bus retains its original cardboard insert, and the windup key is still attached with a string. The windup mechanism works perfectly. This dead stock, near mint toy is a great find. The box measures approximately 9" x 6.2". \$160 - \$300



443



444



445

Lot #444 Outstanding and sought-after four-tin car set made by Bandai Japan and imported by Cragstan. Each toy represents a quintessential 1960s European car design. The box top has one spliced and repaired section of the cover, but the toys are in excellent condition within the box. The Fiat's vinyl roof cover did not retract during testing, but all friction drives work. The toys range from approximately 7" to 8" in length. \$400 - \$700

Lot #445 Shiny fire boat with three 'water' cannons made by SSS of Japan. The toy features a working flywheel, although we could not engage the propeller shaft consistently. The original wrapping paper is still present. The box has a push in the cover from the windup. The toy measures approximately 9.5" L. \$90 - \$180

446



447



448



449



450



Lot #446 Fun friction tin Lizzie top-down convertible with driver. This toy was imported by Marx under the Linemar lineup. The driver is original and proper. The friction drive works and the toy features great graphics of Pikes Peak, Rolls Royce, and Rattle Trap. The toy measures approximately 8" L. \$90 - \$180

Lot #447 Boxed electric tin Jaguar from Japan. This clean black, grey, and red variation was imported by M.T. or Masudaya. The battery compartment is clean, and the on lever is present, but we could not get the car to work. The box measures approximately 8" L. \$100 - \$200

Lot #448 Linemar Mickey Fire Engine Truck by Marx/ Linemar. This used toy features Dewey or Donald figures and includes a nice hood ornament. The spring slips and the back wheel is loose. The toy showcases great lithography and is a rare F.D. item. It measures approximately 6" L. \$140 - \$240

Lot #449 Tin car and trailer set with outboard motor and boat by Cragstan. This near-new set features a working boat motor and friction car. There are light scratches to the right car fender and a cover tear to the box, but otherwise, the set is in near-new condition. A colorful toy that still shines like the day it was made. Box and car are approximately 7" L. \$180 - \$300

Lot #450 Boxed ten-car set of ultra-colorful friction toys by Linemar. The lid has tears on the corners and edges with some repairs inside, but otherwise, the box is crisp with bright colors. The toy set is near new. The box measures approximately 7" x 6.5". \$200 - \$400



451



452



Lot #451 Near new Silver Cloud sedan from Yonezawa. This Rolls Royce toy has the emblem and back plate marked 'Rolls-Royce'. It features a very clean bottom plate and car. The strong box top has a minor tear in the box bottom. "The way to buy a Rolls Royce!" Measures approximately 8.5" L and requires no maintenance! \$200 - \$420

Lot #452 Stunning red and black Chrysler New with shiny brightwork and working friction drive. The box is a professional copy. The car was repainted by S.G., but it is near impossible to tell. All parts are original, including the proper caps and N7211 license plate. The car measures approximately 11.5" L with great proportions. \$500 - \$800

Lot #453 Big scale Jeep with steam shovel made by T.N. or Nomura Toys. Oil tanks are marked on the stretched truck toy. Friction and shovel work. The shovel features a complex gearbox with windows to observe, offering scooping and dumping action. This large tin toy measures in at approximately 13" L. \$200 - \$420

Lot #454 Large-scale firing cannon toy. Cragstan imported this toy from SSS, Japan. The toy is in an immaculate box with inserts. The cannon pulls back and fires, though we could not get the motors to elevate the cannon. The paintwork is sparkling and near new. The toy measures approximately 16" L. \$200 - \$400



453



454

Lot #455 Assorted set of 3 trailers and tractor by SSS, Japan. The toy includes an insert and near new toys. The set features a Thoroughbred Horse trailer, a U.S. Mail Trailer, and a P.I.E. Pacific trailer. The GMC truck with friction drive works and the toy is near new. The trailers are shiny with opening back doors. There is a small amount of tape on the box cover, but otherwise, everything is near new. The box measures approximately 13" x 6.5". \$220 - \$500



455



456



457



458



459



Lot #456 Prestigious Alps tin Plymouth from Japan. This 1950s toy is near new, featuring red, white, and shiny brightwork. The mystery action is a working electric drive with reversing bumpers that cause the car to reverse direction. This is a wonderful scale toy with all the right tinsel. The box is clean and original. The toy measures approximately 12" L and is in pristine condition. \$650 - \$900

Lot #457 Extra large 17" Cadillac Special, circa 1961. A rare toy in near-perfect condition with a flocked interior (velvet-like fibers). The toy features extra clean brightwork, a detailed dashboard with gauges, and sharp Caddy fins. Made by Bandai, Japan, the box lid is lined. This is a scarce toy, and it's difficult to find a better example of this near-new condition toy. \$1,000 - \$1,500

Lot #458 Near new boxed tin helicopter by T.N. (Nomura), Japan, marked U.S. Air Force 1517. The friction drive moves an engine beneath the clear nose cone, showing its pistons in action. Inserts are present, and the toy is in near-new old stock condition. The toy measures approximately 11" L. \$240 - \$500

Lot #459 Extremely clean tin 1955 Buick made by KO of Japan. The toy features a professional reproduction box and has a working friction drive with detailed brightwork. There is light scratching to the base plate, but otherwise, the car is in very good to excellent condition. It measures approximately 10.3" L. \$340 - \$580

Lot #460 Ford Sunliner marked by both Marusan and I.Y. Metal Toys. This unusual hardtop toy is in a 1960s mint green and white color scheme with gold and silver brightwork and a Ford crown emblem on the hood. The friction drive works, and the car comes with a reproduction box. This is a tough toy to find and measures approximately 11.5" L. \$650 - \$850



460

461



462



463



Lot #461 Beautiful red Citroen DS convertible by Bandai. This tin car features a working friction drive and is a true time capsule with original catalog, box, tissue paper, cardboard insert, and even the baggie still present. The car measures approximately 8.5" L. \$300 - \$600

Lot #462 Great-looking red 1963 Chevrolet four-door hardtop. The friction drive works, and the brightwork is sparkling. Box is a reproduction. There are light scratches on the bottom. Chevrolet measures approximately 12" L. \$440 - \$650

Lot #463 Boxed Linemar Jalopy with fun 1950s college graffiti text. This tin car features headlights and a driver. The toy is in clean condition and comes with the remote, box, and insert. The toy did not work for us. The car measures approximately 7" L. \$300 - \$600



464



Lot #464 Battery-operated aircraft carrier tin ship by Marx. This extremely large toy features firing missiles, helicopters, and planes. The helicopter spins and flies up with the press of a spring-loaded launcher, while the planes and six missiles launch. This boxed toy is in excellent condition and offers top-of-the-line features. The box measures approximately 21" L. \$420 - \$640



Lot #465 This is a beautiful big red 1961 Caddy from Yonezawa, Japan. Scarce four door hardtop toy by Y or Yonezawa, Japan. The car is all original, and the friction works beautifully. Original box has been lined and clear coated for stability. Excellent original toy condition with working siren/engine sound. This stunner measures approximately 14" L. \$640 - \$950

465



466



Lot #466 Lot of four Diecast GC-24 riders from the 1980s Changeman Sentai series. The toys are nearly new and include their original cardboard and foam packaging, along with instructions. Guns are present, and the boxes feature crisp corners and are in near-new condition. \$200 - \$420

Lot #467 Tonka and Popy Toys Baron Von Joy #025, a toy that transforms from a Porsche Turbo into a machine robot. This figure, originally by Bandai and Popy Toys, was imported by Tonka under the Gobots brand lineup. \$100 - \$200

467



468



Lot #468 Lot includes a sealed and wrapped Gundam Villain (Zion's Prototype) model in 1:250 scale, along with a near-new Shogun Warriors Action Vehicle featuring missiles. Also includes a Sky Arrow diecast toy with some plastic components. \$80 - \$170



469

Lot #469 Sealed Gundam DX Mobile Suit in Action toy, a large item featuring numerous accessories and weapons. This robot villain was imported from Japan. \$90 - \$200

470



Lot #470 Boxed Mekanda Robo in diecast metal, branded ZINCRO. The toy is dense, with over 80% diecast construction. Features include plastic hands that pull a ratchet to activate spinning blades, chest-fired missiles, and a gold-plated head chevron still intact. The toy is in outstanding near-new condition. \$180 - \$400

471



473



Lot #471 Godaikin-branded Daitetsujin 17 toy, imported by Bandai America and made by Popy Toys. This metallic blue diecast transforms from a robot into a space base. Features include firing ships and fists. The toy is in near-new condition with sealed accessories and instructions included. Both the box and toy are near mint and unused. \$250 - \$500

Lot #472 Combat Armor Dougram variety set A, featuring an outstanding and unused selection. Also includes a SOLTIC toy made of diecast and plastic, which is likewise unused. \$160 - \$320

Lot #473 Large Deluxe Srungle and medium-sized robot toys, both in near-new condition with their original boxes. Includes sticker sheets and missiles. The toys remain nice and white. \$150 - \$300

Lot #474 Sealed deluxe diecast Getter Robo Go robot by Bandai. This toy represents a historic incarnation tracing back to 1974, streamlined and perfected by Bandai Toys. The robot is in near-new condition. \$150 - \$300



472



474

Lot #475 Outstanding near-new Space People Number 129 set by Archer Plastic Toys. Includes Space Men, Women, and Children, all still tied inside the box with clear cellophane. The set features a space baby at attention, grasped around the ankles by mom. The box displays vibrant pink and rocket-themed graphics in excellent condition. \$150 - \$350

475



476



477



478



Lot #476 Clean Lionbot transforming toy with original box and accessories. The parts bag has been opened, but the toy appears complete and barely used. Features include a lion's head that shoots off, missiles that fire from numerous accessories, and blades and swords o-plenty! \$200 - \$400

Lot #477 Quintessential 1980s Transformers Soundwave and Buzzsaw, the robotic condor. Soundwave is in excellent, near-new condition. Accessories are complete, with the sprue and instructions still present. The tech specs on the back include a red decoder. \$250 - \$550

Lot #478 Near-new Goggle V in its briefcase box. This robot transformer, made circa 1982 by Popy and imported from Japan by Bandai America, shows one area of cardboard missing near the handle. The toy is in pristine condition, with cards and parts still taped in place. \$340 - \$650

Lot #479 Sealed new Lego Ideas Voltron set, toy number 022. The box is near-new, with taped edges. \$180 - \$350

Lot #480 Rare and interesting Atari-style gaming console branded by Sears. This is a Sears re-branded Atari 2600, a common practice for Sears and Kenmore appliance lines at the time. The set is untested and comes with two joysticks, no paddles, cardboard inserts, a deluxe box, and games as shown. The console is in good condition, featuring its unique Sears wood grain look. \$160 - \$340

479



Lot #481 Atari video game cartridges of Spy Hunter, Pitfall, Berzerk, Front Line, Donkey Kong, and Defender. The cartridges are untested but show minimal wear on the outsides and include instructions as shown. They are in very good original condition. \$160 - \$340

480



481



482



Lot #482 Transformers Megatron accessories and box, with no toy gun present. The box includes tech specs, a red viewer, and the accessories as shown. The set is in good, barely used condition. \$100 - \$200

483



Lot #483 Boxed Godaikin Daltanias with cover. The toy appears barely used, featuring a clean lion, shiny chrome, and proper paintwork. Accessories are still in the box, and instructions are present. \$300 - \$550

484



Lot #484 Boxed and near-new Godaikin Dynamach. This toy comes from an adult collector who never used it. One box edge is torn, but the toy features shiny swords and includes the instructions along with an extra catalog. A near-new old stock toy. \$400 - \$700

485



Lot #485 Boxed near-new Voltes V. The toy comes with instructions and accessories. The delicate head hinge is intact, and the tank tracks are present; a rarity! Two larger missiles are missing, but otherwise, the toy is near-new and complete. \$1,600 - \$3,500



486



Lot #486 Impossibly difficult-to-get Lucky Draw King Kong vinyl produced by Medicom and Monsterverse. Our toy is a documented purchase and was part of the Lucky Draw event at San Diego Comic-Con. This toy was stored and is now new to market. Production appears to be limited to only 15 pieces, and only one other has surfaced! Buyers were able to attend Comic Con and enter a raffle, with only one or two available there, while the others were distributed through lotteries at different world events. The sculpture has a toy-like aesthetic with well-detailed features, including claw marks on the chest from Godzilla. Medicom Toy X produced this piece in collaboration with designer Hirota Saigansho, using a similar approach to vintage Sofubi or soft vinyl toys. 10.5 inches tall by 7.5 inches wide. \$3,000 - \$6,000

487



Lot #487 Outstanding Apollo-Z space capsule that features three astronauts visible through the window. The battery-operated toy functions with a rolling action followed by a raising movement to shoot the capsule forward. The nose and tail exhaust emit faint blinking lights. The lifting mechanism and capsule motors work properly, and the battery compartment is clean. \$170 - \$350

488



Lot #488 Massive blue diecast and plastic Tetsujin 21 robot by Popy Toys, the largest in the Godaikin lineup. This toy is near-new old stock and represents a 1980s interpretation of the classic 1950s manga character who saved Japan. The styrofoam is bone white, and the toy still has its glossy finish with no wear on the back. Enamel-painted steel armor adheres to leg and arm magnets. The front chest door opens to reveal and shoot red missiles. Magnetic service robots and boys can stick to the armor and inner steel panels. All accessories are present, including inserts and plastic bubbles. The instructions are glossy and still stored beneath the twin battle axes. The toy is in outstanding near-new condition, even with the foot sticker intact. Box measures approximately 21" L x 15" W. \$2,500 - \$4,500

489



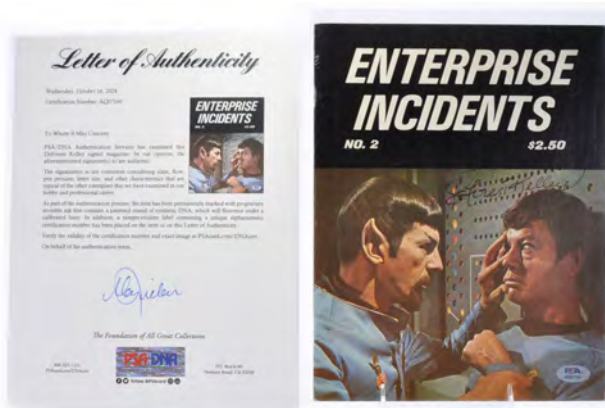
Lot #489 Pre-Transformers Toys Fortress Robot X by Takara of Japan. This early 1980s toy was never released in the United States and is made with diecast, steel, plastic, and magnetic drivers. The toy consists of a transforming robot that turns into a base with chutes and magnetic parts. Tin lithography is used in spots to allow the drivers to stick. This exact toy was featured in an extensive video review on YouTube. The toy stands at over 16" tall and is complete, with directions and the toy catalog. Stickers are unapplied. The box measures approximately 16" L x 7" W x 6" H. The robot expands to nearly 16" tall and is considered the most deluxe and elaborate Diaclone, Microman, and early Transformers toy of its time. \$2,500 - 5,000

490



Lot #490 This is a 1976 Scanlens Star Trek sealed wax pack that has been graded by PSA as 5. Truly a RARE survivor and graded! \$150 - \$300

491



Lot #491 DeForest Kelley signed "Dr. Bones McCoy" Star Trek Enterprise Incidents Magazine Issue No. 2, first published on February 1, 1976. This issue contains fully original content and is complete with a PSA/DNA Certificate of Authenticity (COA) and letter of authenticity. PSA's DNA process ensures the signature's lifetime authenticity, backed by their advanced verification technology. A remarkable collectible for Star Trek enthusiasts. \$250 - \$500

Lot #491B This is a complete PSA-graded 1976 Scanlens Star Trek set, featuring 72 cards, unlike the 1976 Topps set, which has 88 cards. No stickers were issued in this release. This set holds the #4 spot in the PSA registry. These cards are extremely rare, with only 628 graded examples existing. The first and last six cards are particularly hard to find due to poor factory cutting. Scanlens, an Australian company, printed these cards under license from Topps, making this set even rarer than the 1967 Leaf Star Trek set. According to the PSA population report, there are only 5 to 13 examples of each card graded. This is your chance to own one of the rarest Star Trek sets ever printed! \$1,200 - \$2,500

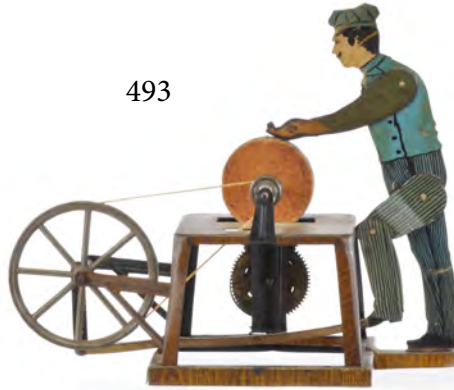


491B

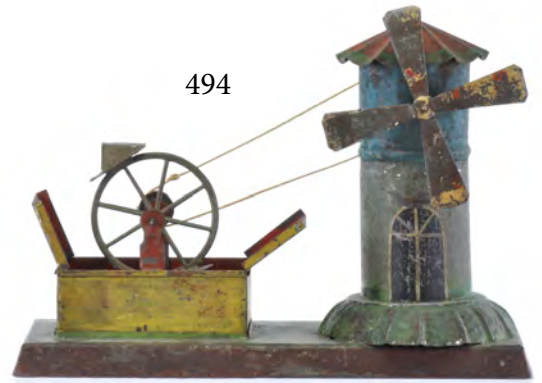
492



493



494



495



496



Lot #492 Beautiful Weeden Steam Engine #43, was introduced in 1896 and produced until 1918. This vertical steam engine features stairs, a balcony, and a man, which is uncommon for Weeden. The toy comes on a wooden plinth and includes its burner. The flywheel has been replaced, and only part of the whistle remains. It stands approximately 12" tall. \$160 - \$320

Lot #493 Arnold No. 502/1 Sharpener Man, circa 1915, with a working windup. No tools are present for the hands, but the toy functions well. The feet appear to pump the grinder. The toy stands approximately 5.5" tall. \$90 - \$160

Lot #494 Tin turn-of-the-century German water toy with a windmill. Similar toys have been cataloged by the Hommola or Zschopau school of tin, circa 1905. Measures approximately 8 1/4" x 3 1/4" x 6" H. \$100 - \$200

Lot #495 Green Schoenner locomotive of the 2-2-0 type with a stork leg piston. Similar toys have been cataloged by Bing and Carette. Our example appears to be similar to the 117 R cataloged in 1905. Toy has reversing lever and is untested. We suspect an expert restoration. The locomotive measures approximately 8 inches long. \$350 - \$600



497

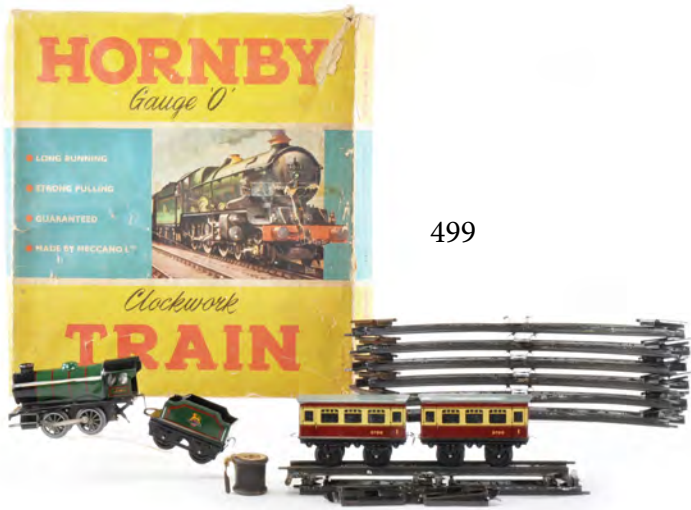


497

Lot #496 LMS 1662 car present. LNER-marked train car. Used Hornby train as shown. Locomotive at 6.5 inches long. Wheels at 1.25 inches inside to inside of drive wheels. Train winds up properly. \$150 - 350

Lot #497 Four-wheel Hubley trains in cast iron with built-in tenders. American outline with cowcatchers. Largest approximately 7" long. \$120 - 300

Lot #498 Lionel Corporation 2-8-4 configuration engine and tender. Bell and delicate guide wires present. Untested O Gauge locomotive marked 736. A substantial toy engine at 11.4 inches without tender. \$180 - \$320



499

Lot #499 Hornby boxed #21 passenger train set. Includes track and cars as shown. Key wind-up works. Car marked 9789, tender marked British Railways, and engine marked 60985. \$150 - \$300



500



501

Lot #501 Lionel Prewar O Gauge 152 engine with nice original finish. Headlight and bell are present. Untested. The toy is approximately 7 inches long. \$180 - \$350



502

Lot #502 Ives Lehigh RR set featuring Caboose 67, Standard Oil Tank 66, and Livestock Transportation Car. \$380 - \$800



503

Lot #503 Near new old stock Bing live steam train and tender. Large passenger car included, measuring over 12 inches, with light crackle to the finish. A beautiful and larger toy set. \$450 - \$900



Lot #504 Bassett Lowke London 1926 tender and Duke of York 4-4-0 engine. O Gauge toy. Features a Wallis and Wallis tag on the train. The clockwork mechanism works. The train and tender together measure approximately 14" L. \$200 - \$400



504

505



Lot #505 Lionel Illinois Central GP-9 Diesel Engine 6-8030 MIB. Engine is bright & clean. Runs Well. Looks like it has hardly been used. Box is in good shape with all end flaps. \$75 - \$150

Lot #506 Lionel 6-18315 Virginian E33 Rectifier Electric Locomotive NM-MIB. Engine is bright & clean. Runs Well. Looks like it has hardly been used. Box is in good shape with all end flaps. \$200 - \$300

Lot #507 Lionel TMCC PWC 6-34502 34503 Baltimore & Ohio F-3 AB Diesel Used O RS #2368 B&O. Engine is bright & clean. Runs Well. Looks like it has hardly been used. Box is in good shape with all end flaps. \$300 - \$400



506

Lot #508 Lionel TMCC 6-24526 & 6-24527 F-3 AB Diesel Powered & Non-Powered Set NM-MIB. Engine is bright & clean. Runs Well. Looks like it has hardly been used. Box is in good shape with all end flaps. \$300 - 400



507

Lot #509 Lionel 6-8260 6-8262 O Gauge Southern Pacific F3 AA Diesel Locomotive/Dummy Set. Engine is bright & clean. Runs Well. Looks like it has hardly been used. Box is in good shape but does have some tears and edgewear. \$200 - \$300



508



509



510

Lot #510 Lionel 6-8970 O Gauge Pennsylvania F3 Tuscan AA Diesel Locomotive Set NMIB. Engine is bright & clean. Runs Well. Looks like it has hardly been used. Box is in good shape but does have some tears and edgewear. \$150 - \$250

511



Lot #511 Lionel 334 Dispatching Board Station in Original Box. Dispatching board in great condition. Working. Complete with everything shown. \$100 - 200

512



Lot #512 This is Lionel 6-38389 O Neil Young UP F3 A-A Diesels. Postwar-inspired #2362 conventional Union Pacific F3 AA diesel. Featuring two Pullmor motors, Magntraction and original postwar tooling, this conventional engine is inspired by a lineage of classic Lionel F3 diesels from the Postwar era. Its key features are: Powered F A-unit features: Die-cast metal pilot and frame Die-cast metal trucks with operating coupler on front Two Pullmor motors Magne-Traction Electronic e-unit with Direction Lock Electronic horn and bell with volume control Operating headlight Illuminated number boards and cab interior Traction tires Non-powered B-unit features: Die-cast metal frame Die-cast metal trucks with fixed couplers Road number: 2362P, 2362TD Dimensions: length: 13 each unit Rail Line: Union Pacific Minimum curve: O-31 Includes: F3 powered A-unit F3 non-powered B-unit Postwar-inspired packaging. Box is in good shape but is a little dirty. \$300 - \$400

Lot #513 Postwar Lionel 616 Diesel Switcher in Original Box. Switcher runs well, no cracks or breaks. Box has edge wear and a tear on one side. Both end flaps intact. \$100 - \$200



513

Lot #514 1958 Scarce Postwar Lionel 209 New Haven Alco Diesel Engines 209P & 209T NMIB. Both are in great shape. Bright & clean, no cracks or breaks. Runs well. Boxes clean with end flaps intact. \$200 - \$400



514



515

Lot #515 Lionel Set No. 1611 The Alaskan Set 614 6825 6464 in Original Set Box. Engine is in great shape. Bright & clean Runs well. Set box has wear, includes intset. Set box handle is torn off. Hard to find set. \$200 - \$300



516

Lot #516 Lionel Postwar Set # 2547WS w. 637 Loco 2046W Tender & 3330 6475 6361 6357 in Set Box. Engine is in great shape. Bright & clean Runs well. Submarine is broken and needs to be replaced. Train car boxes have wear. Set box has wear and tears. Hard to find set. \$300 - \$500

517



Lot #517 Lionel 1959 B&O Steam freight Set 1613S in Original Set Box.

Engine is in great shape. Bright & clean Runs well. Helicopter is broken and needs to be replaced. Train car boxes have wear. Set box has some tape. Hard to find set. \$150 - \$300

518



Lot #518 Lionel No. 1542 Electric Freight Set in original Set Box. Engine is in great shape. Bright & clean Runs well. Train car boxes have wear. Set box is in good shape with flaps intact. \$100 - \$200

519



Lot #519 Lionel 1591 U.S. Marine Land and Sea Military Set 6809 6807 6803 6017-50 In Set Box. Engine is in great shape. Bright & clean Runs well. Tank is missing the turret. Caboose is in a 6017-60 box with wear. Train car boxes have wear. Set box is in good shape with flaps intact. Hard to find set. \$300 - \$500

520



Lot #520 Lionel Texas Special Freight Car Set 8658 in Original Set Box. Engine is in great shape. Bright & clean Runs well. Train car boxes have wear. Set box has wear and is missing one interior top flap. \$200 - \$400

521



Lot #521 Lionel 6-38334 #11288 Alco Orbitor Diesel Freight Set in Original Set Box. Hard to find Set. A 1962 Canaveral Special: Ready for orbital right now, the new Cherry Picker Car is moving into position to load the astronaut into the Mercury Capsule. Three-two-one-blast off! At a designated height rocket falls back to earth and mercury capsule continues to climb. At its peak height capsule parachutes back to earth. A new two-unit Minneapolis and St. Louis diesel is supplying the power for this freighter which comes equipped with husky electronic horn, headlight, and Magne-Traction. Set Includes: 229P Minneapolis & St. Louis powered Alco A unit 229C Minneapolis & St. Louis non-powered Alco B unit 3413 Mercury Capsule Launching Car 6512 Cherry Picker Car 6413 Mercury Capsule Carrying Car 6463 Rocket Fuel Two-dome Tank Car 6059 Minneapolis & St. Louis Caboose Engine runs well. Boxes have wear. Set box has been taped and has lots of wear. Hard to find set! \$200 - \$400



522



Lot #522 MTH 10-1003 Standard Gauge Kingsbury Fire House and Pumper MIB. Fantastic set. Mint in box unused. Tissue/Packing paper is still on the station and the Fire Pumper. Comes in original box and shipper box. \$100 - \$200

Lot #114H Cord toy designed after the one-off custom car owned by legendary designer Brooks Stevens. Mr. Stevens purchased an L-29 Cord while in Cornell and then customized it; this was the result.

Large hand made toy / sculpture in aluminum by the U.S. artist Marc Tyree. This is the first toy car sold, and is being auctioned to set the price on a very limited production. #2 of a maximum 50. Each part was carved, cast, polished, then dyed by Marc. Marc hand assembled the Cord in the style of his work on large scale antique cars-- exacting! The auto was then textured and polished by hand to his liking. Designed by Marc and Ed Sandford at AntiqueToys.com.

The project is to fund Marc's art, and continue large scale toy autos that are sculpted and cast. The project builds on the shoulders of Arcade Toy designs, Tom Sehloff toys, and American auto art in toy form. Made in U.S.A. Length at 11 inches, in a scale with Arcade cast iron Rio and Tom Sehloff Chryslers.

Auburn was a brand name of American automobiles produced from 1900 to 1937, most known for the Auburn Speedster models it produced, which were fast, good-looking and expensive. However, after the 1929 Wall Street Crash, and the economic downturn that ensued, Auburn's expensive automobiles, along with its also very expensive sister marques Duesenberg and Cord, saw inevitable sales downturns, and all vehicle business halted in 1937. \$600 - \$1,200



355A



114H



355B

Lot 355A Regent Jarts Lawn Darts Set In Original Box. Hard to find original Lawn darts set. Set has been used and put back into the box. Some of the fins have small cut marks. Box is in good shape. This is being sold as a collectible item not to use as they are dangerous! \$200 - 400

Lot #355B Spalding Lawn Darts Set (Jarts) In Original Box. Hard to find original Lawn darts set. Set looks like it has never been used.Box has some tears. Hard to find. This is being sold as a collectible item not to use as they are dangerous! \$100 - \$300

355A



Lot #438A 1950's Linemar GMC Stamford Builders Excavating Dump Truck w/Box. Great looking tin litho truck. Does have some light playwear so please look at pictures. Friction front wheel drive motor works as well as manual dump feature. Box is in very good condition. Great graphics! Truck measures 5" long. \$100 - \$200

355B



Lot #438B 1950's Marx Atomic Atomic Submarine 571 Battery-op Works in Original Box. Great looking tin litho submarine. Does have some light playwear so please look at pictures. Works well, lights-up, moves forward, fires missiles. (missing 5 missiles) Battery compartment is clean with no corrosion (battery compartment has replaced cardboard for battery directions. Box has wear and has been taped in multiple places. Great box graphics! Very desirable and hard to find battery-op toy. Submarine measures 13" long. \$300 - \$400

355C



Lot #438C Japan TPS Toys Tin Litho Kindergarten Toy Bus MIB Old Store Stock Friction. Fantastic looking toy bus! Super bright and clean. Great graphics on all 5 sides. Friction motor works well. Box is bright and clean. As always another unusual toy from TPS! Bus measures 10" long. \$100 - \$200

Lot #438D Marx Set of 3 Tin Litho Secret Agent Cars USA International & Agent 012. Nice set of 3 different Secret Agent cars. All have working friction motors with vinyl heads. Includes Blue USA - United Espionage Agency Green International Agent & Black Agent .012. All are in very good shape except Black car has a little rust under the front bumper. Each car measures approximately 4" long. \$100 - \$200



355D

Terms and Conditions

1. In publishing this catalog, Marz Auctions has endeavored to accurately describe all items being sold. All property herein offered for sale is strictly "as is" and it is the bidder's responsibility whether bidding in person, by mail, or by telephone, to determine the exact condition of each item. No statement in this catalog, bill of sale, invoice, or elsewhere by any representative of or person in the employ of Marz Auctions shall be deemed to be a warranty, representation, or assumption of liability with respect to age, condition, size, quality, variety, importance, provenance, or historical relevance of any of these items. Any such statements are strictly matters of opinion.
2. The Auctioneer will be the final judge as to which bidder is the highest bidder. In the event of any dispute in this matter, the auctioneer shall at his discretion decide to reopen the bidding or not.
3. Title to all merchandise shall pass to the highest bidder at the fall of the Auctioneer's "hammer." The purchaser shall assume full risk and responsibility of the lot purchased once title has passed.
4. The buyer shall be required to pay Florida Sales Tax (7.0%) if item(s) are picked up or unless exemption is allowed under the laws regulating such tax.
5. Absentee Bids Mail: As a service to our customers who cannot attend the sale in person, Marz Auctions will execute absentee bids if so authorized by mail. All lots purchased for absentee bidders will be done so at the lowest possible price regardless of the amount of the order bid. We cannot execute "buy" bids. In the event of tie bids between absentee bidders and those present at the auction, preference will be given to the attending bidder. In the event of identical bids from absentee bidders, preference will be given to the first received. Absentee bidders should use the enclosed form and clearly mark the lot number, title and maximum bid. A 20% deposit will be required with all absentee bids. In the event that items purchased by absentee bid are not fully paid for within 15 days, the 20% deposit will be forfeited and the item will be resold. Telephone Bids: As an added courtesy to our absentee bidders, Marz Auctions will have telephone lines available for absentee bidders who would like to participate by phone during the auction. To qualify for a phone line, the same procedure for absentee bids must be followed (see above). The absentee bid form must be completed and mailed with lot #, title, maximum bid ordered and a request for "PHONE." If the item has reached more than your bid order, you may at that time continue the bidding by phone. If it sells for less than your bid price, then like all absentee bids, it is yours for the hammer price . . . regardless of the amount of your bid. In the event of more than six requests for a phone line on a particular lot, preference will be given to the six highest bidders. Marz Auctions cannot guarantee that all phone requests will be honored. Due to heavy demand at certain segments of the auction, it may be impossible to have a line available. Although Marz Auctions will try to accommodate each and every request, we cannot assume responsibilities for any missed calls due to human or technical error. In the event of a missed call, the written absentee bid will still be executed. Requests for phone lines must be received no later than 5 p.m. on the Wednesday before the Auction.
6. Shipping: Marz Auctions will professionally pack, ship and insure any items purchased. Marz Auctions will charge actual shipping costs. Insurance is required on all items over \$200. Charge is 1.20 per \$100.00. We can ship USPS, Fedex, UPS. For larger items, we will ship via freight. Please allow at least 7-10 business days for shipping from receipt of payment.
7. All Sales Are Final.
8. All accounts are to be settled by the end of the sale unless other arrangements have been made beforehand. An interest charge of 1.5% will be added to any payment received after 30 days from auction date.
9. Payment may be made in American dollars by cash or personal check if credit has been established with Marz Auctions, or a letter of bank guarantee from your local bank. We reserve the right to hold all merchandise paid for by check until such check has cleared the bank. We also accept Visa, MasterCard, Discover, PayPal, American Express, Venmo, Cashapp, Wire, Cash, and Zelle. Please contact our office for Domestic or International Wire Transfer information.
10. Marz Auctions are not responsible for any typographical errors or omissions in this catalog or in the subsequent price key. Photographs in this catalog are of the actual objects being sold but exact condition of the objects offered takes precedence on the day of sale.
11. In bidding on any lot here offered the bidder indicates acceptance of these Terms of Sale.
12. Marz Auctions and their representatives reserve the right to refuse admission or to request the departure of any person/persons that are acting in a manner unbecoming to the success of the auction preview or auction.
13. A 21% online buyer's premium will be added to all successful bids and payable as part of the total purchase price. 21% will be charged for absentee bids. For additional information regarding the Terms of Sale or any other matter relevant to this auction contact:

Marz Auctions PO Box 327 Myakka City, FL 34251

oldtoys1960@aol.com

www.MarzAuctions.com

Preview by appointment.

Auction Contacts: Bruce: 941-302-0572, Ed: 727-777-4206





M MARZ
AUCTIONS

